



2016
A/V Solutions and Product Guide

To Order:

- Upon request, all in-stock orders will be shipped same day if ordered by 5pm ET.
- Online: www.btx.com (24/7).
- Phone: 800.666.0996 (8:30am to 7pm ET Monday to Friday).
- Email: sales@btx.com
- Fax: 800.569.4244 (24/7).
- All custom or special order products are non-cancelable and non-returnable.
- A small order charge (SOC) of \$10 will be assessed to orders under \$50. There are no small order charges when orders are placed online.

Shipping Information:

- Freight is FOB Hawthorne, NY or Salt Lake City, UT, depending on shipping location and stock availability. In the event damaged merchandise is received, retain the original shipping carton and contact the shipping company. Please let us know if we can help.
- Unless otherwise specified, your order will ship via UPS ground service or best way. UPS Next Day Air, 2nd Day Air and 3-Day Select services are available upon request.
- FedEx Air, Messenger, or other common carriers of your choice are also available.

Terms:

- VISA, MasterCard, Discover and American Express are gladly accepted at the time of purchase. Use of a credit card to pay open terms balances are subject to a 3% merchant service fee. (Other fees may apply in certain circumstances.)
- Credit terms are available upon BTX's approval of a completed credit application.
- A service charge of 1.5% per month (18% annually) will be assessed against all past due balances.
- For wire payment, please contact us to request our bank information.

Returns:

- All returns must have an RMA (Return Materials Authorization) number assigned by a member of the BTX customer service or sales departments. This number must be clearly marked on the outside of the box or the box will be refused.
- Ship all returns with original packaging and all product components pre-paid to BTX at 5 Skyline Drive, Hawthorne, NY 10532.
- All returned products with a valid RMA number will be evaluated. The issuance of an RMA number does not guarantee credit. If BTX deems that a product is defective and still within the warranty period, we will do one of the following at our discretion: repair or replace the product, or credit your account.
- Products accepted for return for reasons other than defect or error by BTX will be assessed a minimum 15% re-stocking fee and must be received within 30 days from date of shipment. If a manufacturer's restocking charge is greater than 15%, BTX will charge the manufacturer's restocking fee.
- Custom or special order products are only returnable due to manufacturing defects or error by BTX, within the specified warranty period.

Warranty:

BTX guarantees products and equipment of its manufacture against all defects in material and/or workmanship and agrees to remedy any such defect at no charge provided the defective product is returned (transportation pre-paid) to BTX. This warranty extends for 5 years from date of purchase and does not extend to products which have been subjected to neglect, accident or improper use. Warranties on other distributed product sold by BTX are subject solely to the manufacturers' written warranty. The warranty period for BookIT hardware is 1 year from date of sale. There are no other expressed or implied warranties except as set forth herein. BTX is not responsible for consequential damages, incidental damages, or incidental expenses, including injury to persons or property.

Blanket Orders:

You can rely on BTX to manage your regular shipments. Blanket orders must be received in written form with scheduled release dates. The period of a blanket order is for a maximum of 12 months. Blanket orders for standard product may be altered for release quantities or dates with written approval from BTX. If release dates are accelerated, BTX will make every reasonable effort to accommodate the new requirements but shall not be held responsible to meet these new dates. Blanket orders for custom products are non-cancelable and non-returnable. If you require BTX to keep a given amount of bonded inventory for your use, this inventory must be paid for when inventory is segregated for your exclusive use. If at the end of 12 months you have not taken all of the products from the blanket, BTX reserves the right to ship the remaining products and bill you accordingly.

Table of Contents

Digital Wireless Audio and Dante	01
Wireless Collaboration	02
Room Scheduling Solution	03
Smart Room and Digital Signage	04
Cell Booster System / Video Wall Software	05
A/V over IP	06
IPTV and Encoders	07
HD Video over IP	08
Signal Processing	09-15
Pro Plates and Panels	16
MaxBlox and ProBlox	17
Cable Assemblies	18-22
Cable and Connectors	23-26
Testers	27
Integration Essentials	28

FULL SERVICE FABRICATION



Custom Fiber Assemblies, Custom Copper Assemblies and Custom Metalwork

BTX is your expert source for full-service, professional quality fabricated solutions. Our assembly division offers custom fiber and copper assemblies, breakout boxes and reels. Our metal shop provides custom plates and panels with the broadest and deepest selection of A/V connectors available. And, our free Pro Plates & Panels CAD software helps you design and quote your projects quickly and easily. We also build fully configured Intel NUC micro PCs for collaboration and digital signage applications. Our work can be found in a wide range of applications – from broadcast to Broadway, security systems to manufacturing facilities, houses of worship to stadiums and conference rooms to hotel lobbies. While lead times are subject to change, our typical turnaround time is 3-5 days, depending on the scope of your project.

XIRIUM PRO

by NEUTRIK®



Neutrik® XIRIUM PRO® delivers studio quality, full bandwidth, zero-compression wireless audio over long distances with extremely low latency and significantly lowers labor costs.

As a true replacement for cable bound systems, it eliminates the often difficult and time consuming task of running cables. XIRIUM PRO is great for live events, houses of worship, auditoriums and any application where it is difficult or dangerous to run cable. The free XIRIUM PRO app is available for iOS and Android tablets and facilitates the setting of all function parameters and the monitoring of the wireless devices.

Neutrik XIRIUM PRO Basic Kit

NEU-CASNXPBASIC **Basic Kit includes** (1) TX Base Station, (2) RX Base Stations, (1) Analog TX Module, (1) Analog RX Module, (1) RX Repeater Module, (1) Weather Resistant, High Impact Plastic Case, (3) Manfrotto™ Clamps, (3) 2 meter powerCON® TRUE1 Cables, (1) USB Cable, (3) 2.4GHz omni-directional antennas, (3) 5GHz 6dBi omni-directional antenna and an outdoor access point.

Neutrik XIRIUM PRO - Transmitters

NEU-NXP2TX	Neutrik XIRIUM PRO Transmitter Base Unit
NEU-NXPTMANA	Analog Line Transmitter Module
NEU-NXPTMAES	AES Transmission Module
NEU-NXPRMDANTE	Dante Receiver Module

Neutrik XIRIUM PRO - Receivers

NEU-NXP2RX	Neutrik XIRIUM PRO Receiver Base
NEU-NXPRMANA	Analog Line Receiver Module
NEU-NXPRMAES	AES Receiver Module
NEU-NXPRMDANTE	Dante Receiver Module
NEU-NXPRMRP	Repeater Receiver Module



Dante® Ready Solutions

BTX offers a growing line of Dante-enabled products

XIRIUM PRO

DIGITAL WIRELESS AUDIO SYSTEM

NEU-NXPTMDANTE* Neutrik XIRIUM PRO Dante Transmitter Module

NEU-NXPRMDANTE* Neutrik XIRIUM PRO Dante Receiver Module

*Can only be used with the XIRIUM PRO system.

KRAMER

KRA-FC202NET Kramer 2 Input/2 Output Dante Interface with Line or Microphone Level Inputs and Line Level Outputs.

audio-technica

MIC-ATND8677 Microphone Desk Stand with Dante Network Output.

MIC-ATND971 Cardioid Condenser Boundary Microphone with Dante Network Output.

VISIONARY SOLUTIONS

BTX-D200L On-Ramp, 2 Input Balanced Line Level Dante Interface 2 XLR female, 1 RJ45, PoE. Connectorized.

BTX-D250L Off-Ramp, 2 Output Balanced Line Level Dante Interface 2 XLR male, 1 RJ45, PoE. Connectorized.

BTX-D400PA Dante Audio Amplifier, PoE+ Network Amplifier, Class D, 2 Channel. Connectorized.

RDL

Radio Design Labs

RDL-FPNML2P RDL Network to Mic/Line Interface, Dante Input, 2 Balanced Mic/Line Outputs, with PoE.

RDL-RULB4 RDL Line Level Bi-Directional Network Interface, 4 Balanced Line Inputs, Dante Input, 4 Balanced Line Outputs, Dante Output .

RDL-RUMLA2 RDL Dual Mic/Line Preamplifier.

RDL-RUMLB2P RDL Mic/Line Bi-Directional Network Interface, 2 Switchable Mic or Line Inputs, Dante Input, 2 Balanced Line Outputs, Dante Output, with PoE.

RDL-RUNL2P RDL Network to Line Level Interface, Dante Input, 2 Balanced Line Outputs, with PoE.

Solstice by Mersive | Wireless Collaboration

Connect To A Display With Virtually Any Device



Why choose Solstice for wireless collaboration?

- Solstice allows an unlimited amount of users to wirelessly connect to a single screen simultaneously.
- Users can connect with Windows or Mac laptops, Apple or Android mobile devices and tablets.
- Each user can share as many posts to the display as they want depending on the size of the display.
- Any user can control the post of any other user, making it a true collaborative meeting.
- Supports touch screen by connecting the Pod via USB to a touch display.
- Easily change to "Moderator Mode" and have one person run the session for safe lecture hall or classroom environments.
- It is easy to use. Users can click and drag any source to rearrange the layout, move sources quickly into and out of view, make any post full screen or pan/zoom a single source.
- Provides a level of protection with the Moderator Control and Security Settings. One or more leaders can accept/reject incoming user connections and preview media posts submitted by guest users for approval before they appear.

EMERGING TECHNOLOGIES



Mersive Solstice Pod



The Solstice Pod is a turnkey solution that connects to a display in the room, enabling multiple users to instantly connect, share and control content. Up to 256 users can simultaneously connect to the Solstice Pod; it is remotely managed and configured using any web browser.

Part #	Description
MER-SP7000	Solstice Pod Android-based turnkey solution for unlimited users.
MER-SP7100	Solstice Pod Android based turnkey solution for up to 4 users.



BTX Solstice Appliance for Windows



These small form-factor NUC-based Solstice appliances are configured specifically to optimize Solstice performance. They support Active Directory and are available as an embedded Windows-based locked down appliance or an open configuration bundled version. Supports Active Directory.



BTX is an Intel® Gold Technology Provider Partner.

The program provides BTX with a multitude of resources to deliver Intel hardware and technology solutions.

Part #	Description
BTX-SOLA1	Mersive Solstice Commercial Unlimited User Appliance
BTX-SOLA2	Mersive Solstice Commercial SGE 4 User Appliance
BTX-SOLB1	Mersive Solstice Commercial Unlimited User Bundle
BTX-SOLB2	Mersive Solstice Commercial SGE 4 User Bundle



Mersive Solstice Software



Solstice is available as software only, when there is an existing computer dedicated in that room.

Part #	Description
MER-S5000	Solstice Unlimited User License
MER-S5100	Solstice Small Group Edition (SGE) License for up to 4 users



BookIT® Room Scheduling Solution

This elegant, cost-effective and easy-to-deploy system is designed to schedule any conference room on the network from a BookIT touch panel located outside a meeting room, your mobile device or computer. The sleek design fits into any décor and the intuitive interface requires little to no user training. BookIT is directly integrated with MS Exchange™, Office 365™ and Google™ Apps for Work, so no additional server is needed. BookIT's unique yet sensible features inject order and efficiency into the meeting environment.

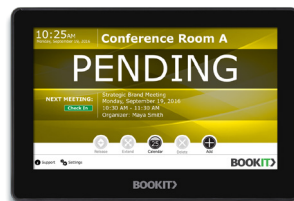
System Includes: 7" BookIT PoE touch panel device, a wall mounting system (brackets included), BookIT Room Scheduling Software and power adapter (when you don't want to use PoE). **For more detailed information, visit www.bookit.tech**

At-A-Glance Room Scheduling

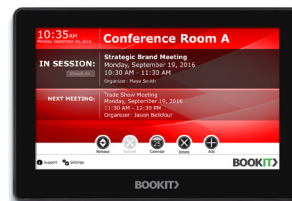
Simply identify room status with universal color coding. No need to guess what is happening behind that closed door!



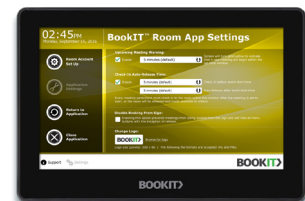
AVAILABLE STATUS



PENDING STATUS



OCCUPIED STATUS



ADMIN SETTINGS

BookIT: Application Features

- **Meeting Room Calendar** At-a-glance room status by clicking on the calendar button. You can see a list of meetings in the room the sign is assigned to. The list is scrollable so you can see out to the end of the booking period allowed in Exchange or Google.
- **Schedule Meetings** Select "Add", enter your credentials and you can now schedule a meeting in any available room at any available time.
- **Meeting Check-In** Check-In! If nobody checks into the room within the configured amount of time, the room will automatically release for others to use. This feature can be enabled, disabled or configured at any time by the administrator.
- **Release Meeting** Your meeting's over early? Why not make it available for others by simply releasing the room on the BookIT touch panel display. The end to your meeting will automatically be updated in your calendar.
- **Extend Meeting** Extend the meeting on the BookIT touch panel display. You can extend the meeting for as long as you need based on the rooms availability.
- **Delete Meeting** Easy to delete it from your phone, computer or at the BookIT display. Only the meeting organizer can delete a meeting.
- **GUI Options** You can easily change backgrounds and include your customers' logo on the display.
- **Support** Touch support and send a predefined message to summon your internal technical support team to the room.

BookIT: Admin Features

- **Step-by-step setup for Outlook Exchange and Google Apps for Work**
- **Control admin passwords**
- **Enable and disable meeting warnings**
- **Adjust and turn off auto release time**
- **Control ability to book a meeting from the sign**
- **Change current BookIT logo to company logo**
- **Change background theme**
- **Configure content and addresses for technical support**

Part #	Description
BTX-BOOKIT07	BookIT Display and Application (includes 1 year software maintenance)
BTX-BOOKIT1YR	BookIT 1-Year Extended Service Maintenance
BTX-BOOKIT2YR	BookIT 2-Year Extended Service Maintenance

Category cable, connectors, tools and PoE injectors. Pages 24-28.

NDS | Smart Meeting Room Signage For Targeted Display Communication



NDS's PADS4 Software is a comprehensive digital signage software solution that is ideal for smart meeting room signage. The software works with a variety of calendar-based solutions such as MS Exchange® and back-end hospitality systems similar to Delphi® by hooking up through the existing customer database. With PADS4 you can design advertising and other digital signage content to display on room screens when a meeting is not in session. Integrate and schedule reception signage, in-room communication and door monitors for seamless communication throughout an entire facility.



Room Sign Packages:

- BTX-NDSRM1** NDS PADS4 Room Sign includes concurrent scheduler, designer and server licenses, HTML5 viewer and IAdea 10" Interactive Signboard.
- BTX-NDSRMX** Additional Room Signs include HTML viewer and IAdea 10" Interactive Signboard.

IAdea | Media Players and Signboards

IAdea® is a recognized pioneer in the global digital signage market since 2000; creating innovative, commercial-grade digital signage media players and integrated displays.



Full HD Simple format HTML5 Web Appliance

IAD-MBR1100 IAdea 1080p Wireless Media Player

Full HD HTML5 Web Appliance

IAD-XMP6200 IAdea 1080p HD HTML5 Media Player, No Audio Output

IAD-XMP6250 IAdea 1080p Solid-State Media Player, Audio Output

IAD-XMP6400 IAdea Full HD Live Media Player, HDMI-in

4K HTML5 Web Appliance

IAD-XMP7300 IAdea 4K HD Web Appliance

IAD-XOP7300 IAdea 4K HD OPS Web Appliance

HTML5 Smart Signboard

IAD-XDS1060 IAdea Basic 10" Signboard w/ Motion Sensor

IAD-XDS1062 IAdea 10" Signboard with PoE

IAD-XDS1078 IAdea 10" Interactive Signboard

HTML5 Enhanced Smart Signboard

IAD-XDS2170 IAdea 21.5" Wide Signboard



BTX NUC | Media Player



BTX is a certified Intel Gold Technology Partner. BTX offers fully configured and assembled digital signage appliances and bundles. Speak to your BTX Sales Representative for more information.



Part #	Description
BTX-NUC01	Intel Core i5 (i5-5250)-1.6 GHZ Processor, 2GB Memory (RAM) 120GB Hard Drive, Intel HD 5000 graphics card, 1 Mini Display Port, 1 HDMI Port, 4 USB 3.0 ports, Windows 7 Pro
BTX-ARW1	BTX 1 Year Advance Replacement Warranty on BTX NUC
BTX-ARW2	BTX 2 Year Advance Replacement Warranty on BTX NUC

WilsonPro | Signal Boosters

Get Rid Of Cellular Dead Zones

These commercial grade cellular/LTE signal boosters are ideal for multi-story office buildings, schools, hotels, warehouses and factories.

WilsonPro cell signal boosters detect the available signal outside the building, bring that signal inside, amplify it and then distribute the amplified signal throughout the building. This assures strong, reliable cell coverage wherever and whenever you need it.

The benefit of a booster system is the ability to bring cell signal from all carriers into areas where it can't reach on its own. Other benefits include greatly extended battery life for cellular devices, improved data speeds, no network usage, and no additional subscription or contract. Also, they support all users and carriers simultaneously. All of this with no device pairing or dropped calls when you exit the building. WilsonPro boosters also improve the connection of an alarm panel's cellular backup. No other solution is capable of all of these benefits!



FEATURES:

- Maximum Gain (+70 dB) ensures widest coverage area (up to 50,000 square feet).
- Maximum Uplink Speeds allow hundreds of mobile devices to be used simultaneously.
- Maximum Distance Capability means DOUBLE the reach to cell towers.

One-Time Purchase:

- No subscription fees
- No contract
- No Internet connection

Improved Cell Experience:

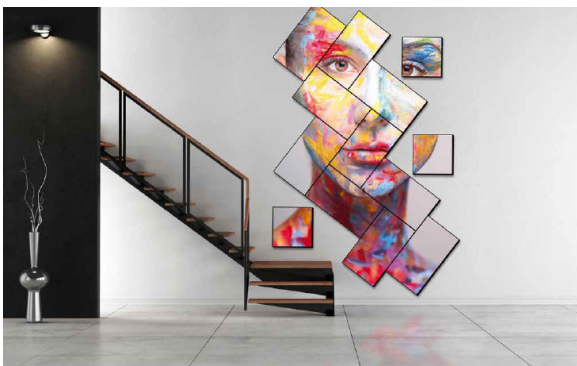
- No more dropped calls
- Stay connected
- Longer cell phone battery life
- Works with all carriers



Part #	Description
WIL-460118	Wilson RF Signal Meter with 6V AC/DC Power Supply, Lithium Ion Battery and DT Rubber Antenna.
WIL-460118SK1	Wilson Survey Kit with WIL-460118 RF Meter, WIL-901117 Antenna Pole Mounting Assembly, WIL-314475 Wide Band Directional Antenna, WIL-950602 2 foot RG6, WIL-971132 SMA Male to N Male, WIL-971151N Female to F Male.

Userful™ | Network Video Wall

Simple Software to Create Stunning Video Walls Up To 8K



Simple and Flexible: Userful Network Video Wall software enables anybody to set up a standard or artistic video wall using an intuitive browser-based video wall builder featuring drag-n-drop ease. It requires standard, off-the-shelf server or PC hardware and network zero client devices (available from BTX) connected over a gigabit Ethernet network for simple deployment and management. Userful's single install setup turns any standard Intel Core i7 PC into a powerful and flexible video wall server appliance. It's easy to use without the need for software management, customizations or updates. Userful is used to create video walls for a range of applications including retail stores, lobbies, museums, restaurants, stadiums, meeting rooms, broadcast centers, banks, control rooms and more.

Part #	Description
USE-BASIC	Userful Basic Software and Zero Client for Standalone Displays and Desktops
USE-STANDARD	Userful Standard Software and Zero Clients for up to 4 displays
USE-PRO	Userful Professional Software and Zero Clients for up to 25 displays
USE-ULTIMATE	Userful Ultimate Software and Zero Clients for High-End Artistic Video Walls including any angle rotation of individual screens





Reach | A/V over IP Video Encoding, Live Streaming, and VOD Distribution Solutions

Reach is an international engineering company that focuses on powerful solutions for the education, healthcare, corporate and house of worship markets. If you can dream it, Reach can stream it.



Education

The Bee7, Bee8, and Bee9 encoding and archiving appliances, when combined with a Media Center Content Management Server provides a cost-effective solution that allows access to an institution's teaching content for those who may not be in attendance. Reach solutions stem the boundaries of physical campuses and provide controllable and customizable access to course content on devices with no recurring fees for encoders, CODECs, or servers. Reach can support a cloud solution, through your cloud provider or Reach PaaS and SaaS services, for simple access to content without the headache of moderating the deployment, maintenance and cost of providing a comprehensive all-in-one solution.

Reach solutions allow institutions to be able to provide content to any device inside or outside the local area network. The Media Center provides instantaneous transcoding to HTML5 and Flash 19 or higher, so that all devices can receive excellent quality video without unnecessarily overusing bandwidth or draining data plans. Another advantage of the Reach solution is that the Media Center can run virtualized on existing server hardware based on Linux Red Hat CentOS, the Media Center web interface is easily customized and re-skinned to meet any institutions' needs.

Healthcare

A Reach healthcare solution takes the guesswork out of communicating the intricacies of sharing healthcare techniques and procedures. Reach records, streams and archives content, and then transfers it and other e-PHI material from the operating room, emergency department or anywhere else in the hospital to a secure server in the cloud safely, without burdening valuable IT department time and resources. Today, as never before, the healthcare industry depends on the transfer of knowledge quickly, efficiently, and in an ecosystem where EMR cannot be compromised. The Reach PaaS and SaaS solutions are HIPAA compliant, HiTrust certified, and verifiably ensure a healthcare institution is in compliance with HIPAA standards.

Corporate

Reach solutions provide the flexibility of delivering content to employees and customers simply and economically. Sales meetings, scrum sessions, impromptu huddle meetings or any content that needs to be shared can be streamed live, archived, and delivered instantaneously, while your customer-focused content can be streamed live and provided as VOD on a YouTube Channel or other CDN.

House of Worship

Religious leaders are often challenged with reaching their congregation and bringing them scheduled religious services and events. Technology has provided the means, but often with insurmountable technical issues and complicated results. Reach solutions simplify the process by making the layer of technology required simple and accessible. Those who are unable to join an event live do not need special software to hear and see the service. With a Reach solution, access is merely a click away.

Part #	Description
REA-BEE8	Bee8 All-in-One Recording, Live Streaming, and Distribution Appliance
REA-BEE7	Bee7 Multi-Stream A/V over IP Appliance
REA-BEE9	Bee9 for Advanced Auto Tracking, Auto-Switching, Recording, Live Streaming, and Distribution Appliance
REA-HD830	Pan, Tilt, Zoom Camera for use with Bee Series.
REA-MSC10	Media Center Software with Perpetual 10 Concurrent User Licenses (available with 30, 100, 500 concurrent user licenses and preloaded on hardware)

Visionary Solutions

Low Cost Encoders, Dante Products and IPTV



Visionary Solutions specializes in IP-based video and audio distribution solutions.

Dante® Products

The Dante On-Ramps and Off-Ramps are small form factor devices that enable up to two channels of balanced line-level audio to work in a Dante network. Because these units have such a small footprint, they can be used just about anywhere. Ideal for incorporating non-Dante microphones, speakers and other products into a Dante system.

The Dante PoE+ Network Amplifier is a subcompact 10W (4 ohms) per channel network solution powered over the category cable so that no external power supply is required. It is robust and suitable for industrial, commercial and Pro A/V installations. The amplifier is easily deployable and enables precise control of sound. Two independent channels can be sourced using any Dante audio on the network by using the Audinate® Dante Controller or other third party software. Ideal for powering speakers.



Part #	Description
BTX-D200L	On-Ramp, 2 input balanced line level Dante interface. 2 XLR female, 1 RJ45, PoE
BTX-D250L	Off-Ramp, 2 output balanced line level Dante interface. 2 XLR male, 1 RJ45, PoE
BTX-D400PA	Dante Audio Amplifier, PoE+ Network Amplifier, Class D, 2 x Stereo Channel

Economy Encoders

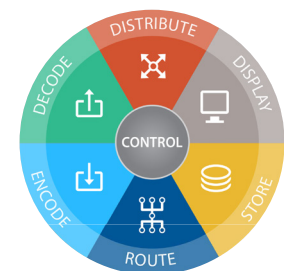
Visionary Solutions' M400 Series of encoders feature a small form factor for easy deployment and flexible H.264 encoding up to 1080p with dual bit-rate output for different displays and applications. There is an onboard scaler for input video and the sources include HDMI and CVBS, SDI or VGA and Component. The management and configuration of all the M400 Series of encoders can be done via a web interface or web API, affording a simple and consistent method of controlling the units. This is an especially attractive solution for Houses of Worship, K-12, and other markets where high quality, yet economical encoders, are a requirement.

Part #	Description
VSI-M4001	Visionary Video Encoder, HDMI & CVBS Inputs
VSI-M4002	Visionary Video Encoder, SDI Input
VSI-M4003	Visionary Video Encoder, VGA & Component Inputs



IPTV

Visionary Solutions' IPTV System delivers high quality video to multiple device types over virtually any network. The system features a modular, open standard architecture allowing users to expand their system and add feature upgrades as budgets permit and changes are needed. With the middleware PackeTV® software, TV channels and video-on-demand can be introduced in a simple, menu driven format. Our technical sales team is available to help specify an end-to-end solution.



H.264 Encoders

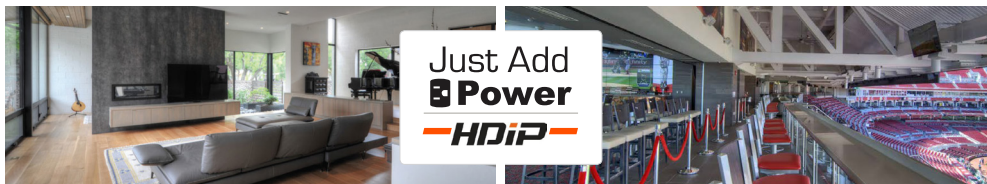
Part #	Description
VSI-AVN443	HDMI / DVI-D SDI Input
VSI-AVN441	HDMI / DVI-D Composite BNC Component Input
VSI-AVN422	HDMI / DVI-D Input
VSI-AVN420	HDMI / DVI-D Composite BNC S-Video Input



Just Add
Power

Just Add Power

4K HDMI® Over IP Distribution Over Ethernet LAN



Think Network. Not Matrix.

HDMI® over IP (HD/IP™) from Just Add Power is an Ethernet network-based HD video distribution system that is ideal for integrators delivering large-scale, multi-zone HDTV and video wall projects. Unlike fixed format HDMI matrices, HD/IP™ lets you create a network of HDMI devices that is scalable to the exact size you require, from 1x1 up to 4,000x65,000.

FEATURES:

- On-Board 4K up / downscaling
- HDCP 2.2 Support
- Works with all 4K Sources
- Zero Detectable Latency
- Seamless Switching
- VGA & HDMI Wall Plate Inputs
- Image Preview
- Video Wall Support – up to 256 displays
- Seamless HDR Management
- Analog Audio Inputs and Outputs
- Custom Logo Overlay & Default Image
- Dolby Atmos and Dolby Downmix
- Integrated Control - RS-232, CEC, and IR over IP integrated in each device
- Known Track Record with tens of thousands of completed projects installed

2G HD over IP Platform

The award-winning second generation of Just Add Power products have come to be relied on the world over by professional custom installers building video matrixes large and small of networked HDMI sources and displays. All 2G models support a maximum resolution of Full HD 1080p and different second generation models can be mixed and matched in any combination, letting you implement the costlier and feature-rich models only in zones where they are truly required.

2G Series – Check datasheets online for all features.

JUS-VB5HDIP408A	2G Transmitter	JUS-VB5HDIP208A	2G Receiver
JUS-VB5HDIP408POE	2G Transmitter (PoE)	JUS-VB5HDIP208POE	2G Receiver (PoE)
JUS-VB5HDIP439A	2G Transmitter (Rackmount)		

2G+ Series – All of the features of the 2G Series plus much more. Check datasheets online for all features.

JUS-VB5HDIP418A	2G+ Transmitter	JUS-VB5HDIP428POE	2G+ HDI-SDI Transmitter (PoE)
JUS-VB5HDIP418POE	2G+ Transmitter (PoE)	JUS-VB5HDIP459A	2G+4+ Video Tiling Processor
JUS-VB5HDIP449A	2G+ Transmitter (Rackmount)	JUS-VB5HDIP218A	2G+ Receiver
JUS-VB5HDIP418AVP	2G+ AVPro Transmitter (PoE)	JUS-VB5HDIP218POE	2G+ Receiver (PoE)
JUS-VB5HDIP428A	2G+ HDI-SDI Transmitter	JUS-VB5HDIP218AVP	2G+ AVPro Receiver (PoE)

3G+ Ultra HD over IP Platform

3G+ is the latest evolution in HDMI over IP and has a suite of features tailored for professional integrators. 3G Ultra HD over IP models have primarily been created to accommodate the need within the Pro AV industry to be able to more easily and more affordably distribute 2160p / Ultra HD / 4K content with HDCP 2.2 encryption to multiple displays (HDMI 2.0 or otherwise) over a local area network. Thanks to 3G's scaling capabilities, using purely 3G models of TX and RX makes any resolution of content up to and including 4K available on any integrated screen

3G+ Series – Check datasheets online for all features.

JUS-VB5HDIP718AVP	3G+ AVPro Transmitter (PoE)	JUS-VB5HDIP717HIFI	3G+ Hifi Transmitter
JUS-VB5HDIP749AVP	3G+ AVPro Transmitter (Rackmount)	JUS-VB5HDIP518AVP	3G+ Receiver (PoE or DC Power)

Accessory Devices

JUS-VB5HDIPRS1U	Razor Shelf Accessory Device
JUS-VB5HDIPIRD	IR Dongle
JUS-VB5HDIPIRM	IR Manager

Gigabit Managed Switches

The Distribution Hub for Your HD/IP™ Network

By using Luxul's Layer 3 PoE switches alongside Just Add Power's HD over IP transmitters and receivers, integrators can build "any size" video matrix that is scalable up to a maximum of 4,000 inputs x 65,000 outputs. Luxul Switches support 802.3af and 802.3at (PoE+). PoE+ provides up to 25.5 watts of power per device. All four Luxul models are Layer 3, enabling endpoint control of RS232 or CEC devices and supporting console API features of Just Add Power's HD over IP products. All AMS models also have ports in the rear of the device rather than in the front.



LUXUL

LXL-AMS2616P, LXL-AMS1208P, LXL-XMS2624P	12/8 ports, 26/16 & 26/24 ports PoE+	Fully supported
LXL-AMS4424P Stackable Switch Series	26/24 ports PoE+	Fully supported

Atlona | OmniStream™



OmniStream™ is an all-new A/V over IP product family from Atlona for distributing 4K video, audio and control over a standard Gigabit network. It delivers the performance and dependability of traditional A/V distribution, with the virtually unlimited scalability, security, and cost efficiency of integrating over IP networks. It is the industry's first dual-channel, dual-stream solution for A/V over IP.

Part #	Description
ATL-ATOMNI111	OmniStream Single Channel Networked A/V Encoder
ATL-ATOMNI112	OmniStream Dual Channel Networked A/V Encoder
ATL-ATOMNI121	OmniStream Single Channel Networked A/V Decoder

Part #	Description
ATL-ATOMNI122	OmniStream Dual Channel Networked A/V Decoder
ATL-ATOMNI232	OmniStream Dual-Channel Dante™ Networked Audio Interface

Atlona | Full Family Of Products

Switchers, Extenders, Scalers, Converters, Distribution Amps and Wall Plate Options.



Atlona | Multi-format Switchers



Part #	Description
ATL-ATUHDCLSO824	4K/UHD, 8x2 Multi-format Matrix Switcher with Dual, HDBaseT™ and Mirrored HDMI Outputs.
ATL-ATUHDCLSO612ED	4K/UHD, 6-Input Multi-format Switcher with Mirrored HDMI and HDBaseT Outputs and Automatic Display Control.
ATL-ATUHDCLSO601	4K/UHD 6-Input Multi-format Switcher with Mirrored HDMI and HDBaseT Outputs, PoE and Auto-Switching.

Atlona | HDVS Extender/Scaler Family



Part #	Description
ATL-ATHDVS150TX	3-Input Switcher for HDMI and VGA Inputs with HDBaseT Output.
ATL-ATHDVS200TX	3-Input Switcher for HDMI and VGA Sources with Automatic Display Control and Ethernet-Enabled HDBaseT Output.
ATL-ATHDVS150TXWP	2-Input Wall Plate Switcher for HDMI and VGA Inputs with HDBaseT Output.
ATL-ATHDVS200RX	HDMI HDBaseT Receiver Scaler Box, Ethernet Enabled.
ATL-ATHDVS150RX	HDBaseT scaler receiver for HDMI transmission over category cable. Receives A/V signals up to 1080p/60Hz or 1920x1200 video with embedded multi-channel audio.
ATL-ATHDVS200TXWP	2-Input Wall Plate Switcher for HDMI and VGA Sources with Ethernet-Enabled HDBaseT Output.

Atlona | 4K UHD Matrix Switchers

UHD-PRO3 Series – HDMI® to HDBaseT™



ATL-ATUHDPRO31616M	4K/UHD Dual-Distance 16x16 HDMI to HDBaseT Matrix Switcher with PoE
ATL-ATUHDPRO388M	4K/UHD Dual-Distance 8x8 HDMI to HDBaseT Matrix Switcher with PoE
ATL-ATUHDPRO366M	4K/UHD Dual-Distance 6x6 HDMI to HDBaseT Matrix Switcher with PoE
ATL-ATUHDPRO344M	4K/UHD Dual-Distance 4x4 HDMI to HDBaseT Matrix Switcher with PoE

UHD-H2H Series – HDMI to HDMI



ATL-ATUHDH2H88M	4K/UHD 8x8 HDMI to HDMI Matrix Switcher
ATL-ATUHDH2H44M	4K/UHD 4x4 HDMI to HDMI Matrix Switcher

Atlona | 4K UHD Switchers

SW-5 Series – HDMI Switchers



ATL-ATUHDSW52ED	4K/UHD 5-Input HDMI Switcher with Mirrored HDMI, HDBaseT Outputs and PoE
ATL-ATUHDSW52	4K/UHD 5-Input HDMI Switcher with Mirrored HDMI Outputs
ATL-ATUHDSW5000ED	4K/UHD 5 Input HDMI Switcher with Two HDBaseT Inputs and Mirrored HDMI/ HDBaseT Outputs

Atlona | 4K UHD Extenders

UHD-EX Series



ATL-ATUHDEX100CEAKIT	4K/UHD HDMI Over 100 m HDBaseT TX/RX with Ethernet, Control and PoE, and Return Optical Audio
ATL-ATUHDEX100CERX	4K/UHD HDMI Over 100 m HDBaseT Receiver with Ethernet, Control and PoE
ATL-ATUHDEX70CKIT	4K/UHD HDMI Over HDBaseT TX/RX with Control and PoE
ATL-ATUHDEX70CRX	4K/UHD HDMI Over HDBaseT Receiver with Control and PoE

Atlona | Distribution Amplifier Family and Audio

HDBaseT™ Distribution Amplifier Family



ATL-ATHDDA8	1x8 HDMI Distribution Amplifier with 4K/UHD support
ATL-ATHDDA4	1x4 HDMI Distribution Amplifier with 4K/UHD support
ATL-ATHDDA2	1x2 HDMI® Distribution Amplifier with 4K/UHD support
ATL-ATUHDM2CBAL	4K/UHD HDMI Multi-Channel Digital to 2-CH Balanced Analog Audio Converter
ATL-ATHDM2C	HDMI Multi-Channel to 2-CH Converter

Atlona | IP Control System



Part #	Description
ATL-ATANC108D	8-Button Network Control Panel for Atlona IP-controllable products

Atlona | 4K Distribution Amplifiers



HDMI® to HDBaseT™ Distribution Family

ATL-ATUHDCAT8	4K/UHD 8-Output HDMI to HDBaseT Distribution Amplifier
ATL-ATUHDCAT4ED	4K/UHD 4-Output HDMI to HDBaseT Extended Distance Distribution Amplifier
ATL-ATUHDCAT4	4K/UHD 4-Output HDMI to HDBaseT Distribution Amplifier

Atlona | Distribution Amplifier Family and Audio



HDMI Distribution Family

ATL-ATHDCAT8ED	2x8 HDMI to HDBaseT™ Distribution Amplifier with Extended Distance. Up to 328 ft. (100 m)
ATL-ATHDCAT8	2x8 HDMI to HDBaseT™ Distribution Amplifier. Up to 230 ft. (70 m)
ATL-ATHDCAT4	2x4 HDMI to HDBaseT™ Distribution Amplifier. Up to 230 ft. (70 m)
ATL-ATHDDA8	1x8 HDMI Distribution Amplifier with 4K/UHD support
ATL-ATHDDA4	1x4 HDMI Distribution Amplifier with 4K/UHD support
ATL-ATHDDA2	1x2 HDMI® Distribution Amplifier with 4K/UHD support
ATL-ATUHDM2CBAL	4K/UHD HDMI Multi-Channel Digital to 2-CH Balanced Analog Audio Converter
ATL-ATHDM2C	HDMI Multi-Channel to 2-CH Converter

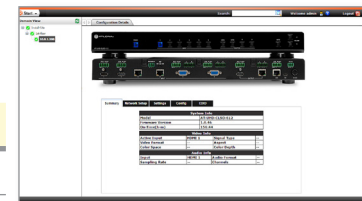
Atlona | Converters and Scalers



HDMI Distribution Family

ATL-ATHDSC500	Scaler with built-in 3-in-one switcher for HDMI and VGA signals, 2 HDMI inputs and a VGA input with 3.5mm audio connector
ATL-ATHD610	DVI with Analog/Digital Audio to HDMI Converter and Embedder
ATL-ATHD530	HDMI/DVI to Composite and S-Video Down-Converter
ATL-ATHD550	HDMI Up/Down Scaler/Converter
ATL-ATHD120	Composite Video (BNC) + Stereo Audio to HDMI Video format Converter and Scaler
ATL-ATVGA300CV	VGA to Component or Component to VGA Converter Scaler
ATL-ATA/VS100	Composite or S-Video to Component or VGA Scaler and Converter
ATL-ATHD420	HDMI to VGA/Component + Stereo Audio format Converter
ATL-ATHD3GSDI	HDMI to 3G/HD/SD-SDI Converter

Atlona | Atlona Management System (AMS) Software



Part #	Description
ATL-ATSWAMS	Network management and configuration of Atlona IP-controllable products

Gefen | 4K Product Series

4K UHD Extenders

GEF-GTBUHD2IRSELRPOLBLK	Extend HDMI, RS-232 And Bi-Directional IR Over A Single Cat-5 Up To 495 Ft/150 M
GEF-GTBHDBTPOLBLK	HDBaseT Extender for HDMI using one CAT-5e cable up to 230 Ft/70 M
GEF-EXTHDBOOST141	Extends HDMI Up To 115 Ft At 4K Ultra HD Resolutions
GEF-EXTHDRS2IR4K2K1FO	4K Ultra HD Extender Over One Fiber w/ RS-232 And 2-Way IR
GEF-EXTUHDAHBT2	4K Ultra HD HDBaseT™ 2.0 Extender for HDMI w/ Ethernet, RS-232, 2-Way IR, And 2-Way Audio
GEF-GTBUHDHBT2	4K Ultra HD HDBaseT™ 2.0 Extender for HDMI w/ RS-232 And 2-Way IR



4K UHD Splitters

GEF-GTBHD4K2K142CBLK	4K Ultra HD 1:2 Splitter for HDMI
GEF-GTBHD4K2K144CBLK	4K Ultra HD 1:4 Splitter for HDMI
GEF-GTBHD4K2K148CBLK	4K Ultra HD 1:8 Splitter for HDMI



4K UHD 600 Mhz Splitters

GEF-EXTUHD60012	4K Ultra HD 600 MHz 1:2 Splitter MultiLayer Cascading Ability
GEF-EXTUHD60014	4K Ultra HD 600 MHz 1:4 Splitter MultiLayer Cascading Ability
GEF-EXTUHD60018	4K Ultra HD 600 MHz 1:8 Splitter MultiLayer Cascading Ability

4K UHD Switchers

GEF-GTBHD4K2K441BLK	Switch 4 Ultra Hi-Def Sources To One Ultra HD Display With 3DTV And 4K X 2K Ultra Hi-Def Support
GEF-EXTHDMVSL441	Gefen 4x1 Multiview Seamless Switcher for HDMI accepts four Hi-Def sources and outputs them individually or as windows on a single HDTV display

4K UHD 600 Mhz Switchers

GEF-EXTUHD60041	4K Ultra HD 600 MHz 4x1 Switcher
------------------------	----------------------------------

4K UHD Extenders

GEF-GEFUHD89HBT2	4K Ultra HD 8x9 Matrix for HDMI w/ HDCP 2.2, HDBaseT, & POH
GEF-EXTUHD88	4K Ultra HD 8x8 Matrix for HDMI w/ HDCP 2.2
GEF-GTBHD4K2K848BLK	Route 8 4K Ultra HD Sources To 8 Displays With HDCP, 3DTV and 7.1 Channel LPCM and HBR Support
GEF-GTBHD4K2K444BLK	Route 4 Ultra HD Sources To 4 Ultra HD Displays With FST, 3DTV and 4Kx2K Ultra HD Support
GEF-GTBHD4K2K642BLK	Route 6 Ultra HD Sources To 2 Ultra HD Displays With FST, 3DTV and Ultra HD 4Kx2K Support
GEF-GTBHD4K2K442BLK	Route 4 Ultra HD Sources To 2 Ultra HD Displays With FST, 3DTV and 4Kx2K Ultra HD Support



Gefen | Video Wall & Multiview Switches

GEF-GEFHDFSTMOD16416HD	16x16 Modular Matrix for HDMI w/ HDCP - HDMI In/HDMI Out
GEF-GEFHDFSTMOD16416HDELRL	16x16 Modular Matrix for HDMI w/ HDCP - HDMI In/ELR Out



Gefen | Video Over IP

Video/KVM Over IP

GEF-EXTCULAN	Video/KVM over IP System/Matrix Controller
GEF-EXTHD2IRSLANRX	HDMI over IP with RS-232 and Bi-Directional IR - Receiver Package
GEF-EXTHD2IRSLANTX	HDMI over IP with RS-232 and Bi-Directional IR - Sender Package
GEF-EXTHDKVMLANRX	HD KVM over IP - Receiver Package
GEF-EXTHDKVMLANTX	HD KVM over IP - Sender Package
GEF-EXTDVIKVMLANLRX	DVI KVM over IP w/ Local DVI Output - Receiver Unit Package
GEF-EXTDVIKVMLANLTX	DVI KVM over IP w/ Local DVI Output - Sender Unit Package
GEF-EXTDVIKVMLANRX	DVI KVM over IP - Receiver Package
GEF-EXTDVIKVMLANTX	DVI KVM over IP - Sender Package
GEF-EXTVGAKVMLANRX	VGA KVM over IP - Receiver Package
GEF-EXTVGAKVMLANTX	VGA KVM over IP - Sender Package



Gefen | Wireless HDMI

Wireless HDMI Extenders



GEF-EXTWHD1080PLR	Wirelessly Extends HDMI At 1080p Full HD With Multichannel Digital Audio Up To 100 ft. (30 m)
GEF-EXTWHD1080PLRXTX	Wireless Extender for HDMI 5 GHZ LR (Long Range) - Sender Package
GEF-EXTWHD1080PSR	Wirelessly Extends HDMI Video At 1080p Full HD With Multichannel Digital Audio Up To 33 ft. (10 m)
GEF-EXTWHD1080PSRXTX	Wireless Extender for HDMI 5 GHZ SR (Short Range) - Sender Package
GEF-GTVWHD60G	Wireless for HDMI 60 GHZ Extender System

Wireless Matrix

GEF-EXTWHDMTX	5 GHZ Wireless Matrix for HDMI - Transmitter (Scalable Wireless Matrix Up To 8 Senders and 4 Receivers)
GEF-EXTWHDMRX	5 GHZ Wireless Matrix for HDMI - Receiver (Scalable Wireless Matrix Up To 8 Senders and 4 Receivers)

Gefen | Matrix

HDMI Maxtrix

GEF-GEFHDFSTMOD16416HD	16x16 Modular Matrix for HDMI w/ HDCP - HDMI In/HDMI Out
GEF-GEFHDFSTMOD16416HDELRL	16x16 Modular Matrix for HDMI w/ HDCP - HDMI In/ELR Out
GEF-GEFHDFSTMOD32432HD	32x32 Modular Matrix for HDMI w/ HDCP - HDMI In/HDMI Out
GEF-GEFHDFSTMOD32432HDELRL	32x32 Modular Matrix for HDMI w/ HDCP - HDMI In/ELR Out

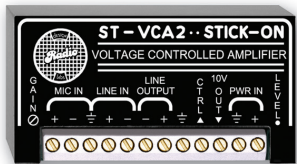


HDMI Maxtrix

GEF-EXTDVI16416	16x16 DVI Crosspoint Matrix
GEF-EXTDVI444DL	4x4 DVI Dual Link Matrix
GEF-EXTDVI848	8x8 DVI Matrix
GEF-GEFDVI16416PB	16x16 DVI Matrix with Front Panel Push Button Control

Radio Design Labs

Stick-On®



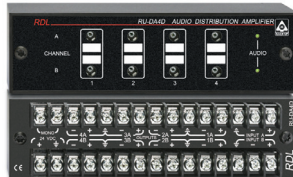
ST = Stick On®

Flat-Pak™



FP = Flat Pak™

Rack-Up®



RU = Rack Up®

EZ Series



EZ = EZ Series

These designations found within each part number determine the form factor.

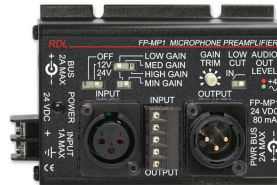
Audio Processing



- Automatic level control
- Consistent levels from variable sources
- AGC with simple single-control setup
- Level control range > 20 db
- Gated control to avoid level seeking
- Stereo unbalanced (shown)
- Great for multi-disc CD players

Part #	Description
RDL-FPPEQ3	3 Band Parametric EQ
RDL-RUADL2	Professional Audio Delay - 1x2 - 0 to 135 ms on Each Output
RDL-RUEQ2	2 Band Equalizer with Knobs
RDL-RUEQ3	3 Band Equalizer with Knobs
RDL-STCL2	Compressor/Limiter - Line Level
RDL-STEQ3	3 Band Equalizer - Line Level
RDL-STGCA3	Gain Control Amplifier - Line Level
RDL-STGLA1	Gated Line Amplifier - Noise Gate
RDL-STGSP1	Gated Speech Preamplifier - Mic/Line
RDL-STLEQ1	Loudness Equalizer - Use with RDL VCA

Microphone Pre-Amps



- Studio-quality low-noise performance
- Switchable internal phantom voltage
- XLR and terminal block connections
- Selectable input level ranges
- Adjustable gain with dual-LED VU metering
- 19-65 dB adjustable gain
- Ultra-compact all metal construction

Part #	Description
RDL-STM1	Microphone Preamplifier - Fixed 50 dB Gain w/ 24Vdc Phantom
RDL-STM2	Adjustable Gain Mic Preamp - 35 to 65 dB Gain w/ 24Vdc Phantom
RDL-STM3	High Gain Mic Preamp - 35 to 75 dB Gain w/ 24Vdc Phantom
RDL-STMLDA3	Studio Quality Mic Preamp w/ 24Vdc phantom - 3 Line Outputs
RDL-RUMLA2	Dual Mic/Line Preamplifier - 2 XLR In, 2 XLR Out

Part #	Description (Additional Microphone Products)
RDL-STMPA2	Microphone Phantom Adapter - 2 Channel
RDL-FPMPA2	Dual Microphone Phantom Adapter 12, 24, 48 V - XLR

RDL has a wide variety of Dante products. See a sampling on page 1 and www.btx.com for a complete listing.

Power Amplifiers



- 20 RMS power amplifier
- 8Ω / 25v / 70v / 100v outputs available
- Integral audio compressor to control clipping
- High overall operating audio level
- Maximized audio level for output power
- Audio quality superior to standard amplifiers

Part #	Description
RDL-EZPA20	20w/channel 8 Ohm stereo w/ analog compressor/limiter
RDL-TXPA40D	40w/channel 8 Ohm
RDL-EZMXA20	Mixer Amp 10w/channel 8 Ohm - 1 mic+2 stereo
RDL-STPA6	6W 8 Ohm Power Amp
RDL-STPA18	18W 8 Ohm Power Amp

Decora Style Amplifiers and Loudspeakers



Part #	Description
RDL-DPA3	3.5 Watt Audio Amplifier with Local Input Override
RDL-DHPA3	3.5 Watt Audio Power and Headphone Amplifier
RDL-DSP1A	2 Watt Decora-Style 8 Ohm Loudspeaker
RDL-DPSP1	Decora-Style Active Loudspeaker
RDL-DPSP1A	Decora-Style Active Loudspeaker (format-A)

D Series Controls, Indicators and Connection Plates

D Series products are user controls, indicators and connection plates that are compatible with Decora® style mounting. D Series modules and jacks connect directly to a variety of active RDL modules in multiple product series and are compatible with many OEM products.



See www.btx.com for a complete list of part numbers

24VDC Power Supplies

Part #	Output Current	Input Voltage
RDL-PS24AS	500 mA	120
RDL-PS24KS	1000 mA	120
RDL-PS24V2A	2000 mA	120 or 240

Notes: In order to determine the correct power supply for your RDL product needs, add the current requirements (amps or milliamps) together for all of the individual products and select a power supply with a higher current output rating (20% extra is recommended).



Kramer

H.264 Encoder, Recorder, Streamer and Decoder

The Kramer **KRA-KDSEN3** is an H.264 encoder for HDMI signals up to 1080p/60. The KRA-KDSEN3 provides unicast or multicast streaming to the **KRA-KDSDEC3** decoder or computers running VLC® software. The KRA-KDSEN3 can also record content to a network drive for later access.

KRA-OPS1	HDBaseT Receiver with OPS Slot	KRA-KDSEN3	H.264 Decoder for Encoded Signals up to 1080p60
-----------------	--------------------------------	-------------------	---



4-Input Multi-format Video and Step-In Module Series

Part #	Description
KRA-SIDX1N	DGKat™ twisted pair transmitter and step-in commander for computer graphics video, HDMI, DVI, DisplayPort and unbalanced stereo audio signals.
KRA-SIDX2N	HDBaseT twisted pair transmitter and step-in commander for computer graphics video, HDMI, DVI, DisplayPort and unbalanced stereo audio signals.
KRA-SIDX3N	HDMI transmitter and step-in commander for computer graphics video, HDMI, DVI, DisplayPort and unbalanced stereo audio signals.



EDID Processor

The **KRA-PT1C** is an EDID processor for HDMI signals. It allows you to lock EDID signals to support or not support HDCP, multi-channel audio or deep color signals that may or may not be compatible with the display.

KRA-PT1C	EDID Processor
-----------------	----------------



Short and Extended Range HDBaseT Twisted Pair Transmitter and Receiver for HDMI, Bi-Directional RS-232 and IR Signals

Part #	Description	Part #	Description
KRA-TP580TXR	Transmitter up to 330ft./100m	KRA-TP580T	Transmitter up to 230ft./70m
KRA-TP580RXR	Receiver for KRA-TP580RXR	KRA-TP580R	Receiver for KRA-TP580T



HDBaseT Receiver Compatible with all Devices Supporting the Standard OPS Slot

The **KRA-OPS1** is an internal HDBaseT Receiver that is compatible with all display devices utilizing the standard Intel OPS slot. It can be used to receive HDMI and DisplayPort, bi-directional RS-232 and Ethernet signals from any HDBaseT Transmitter.

KRA-OPS1	HDBaseT Receiver with OPS Slot
-----------------	--------------------------------



8x8 HDMI to HDMI or HDBaseT Matrix Switcher

The **KRA-VS88DT** is an HDMI/HDBT matrix switcher for HDMI, HDBaseT and IR signals. The unit accepts up to eight HDMI and IR inputs and routes any or all of them to any or all of eight HDMI or HDBaseT and IR outputs for connection to compatible HDBaseT receivers.

KRA-VS88DT	8x8 HDMI to HDMI/HDBaseT Matrix Switch
-------------------	--



12-Input HDMI and Analog ProScale™ Presentation Digital Scaler/Switcher with Microphone Inputs and Ethernet Control

The **KRA-VP444** is a high performance presentation scaler/switcher for HDMI and computer graphics signals. The unit scales the video, embeds the audio and outputs the signal to two HDMI (with embedded audio) outputs (with S/PDIF and balanced stereo audio) simultaneously.

KRA-VP444	HDMI/Analog ProScale Presentation Digital Scaler/Switcher
------------------	---



2x2 Dante™ Interface

The **KRA-FC202NET** is a 2-input/2-output Dante™ interface with line or microphone level inputs and line level outputs. It connects analog inputs to a digital Dante network or outputs 2 channels from a Dante network.

KRA-FC202NET	Kramer 2 Input/2 Output Dante Interface with Line or Microphone Level Inputs and Line Level Outputs.
---------------------	--



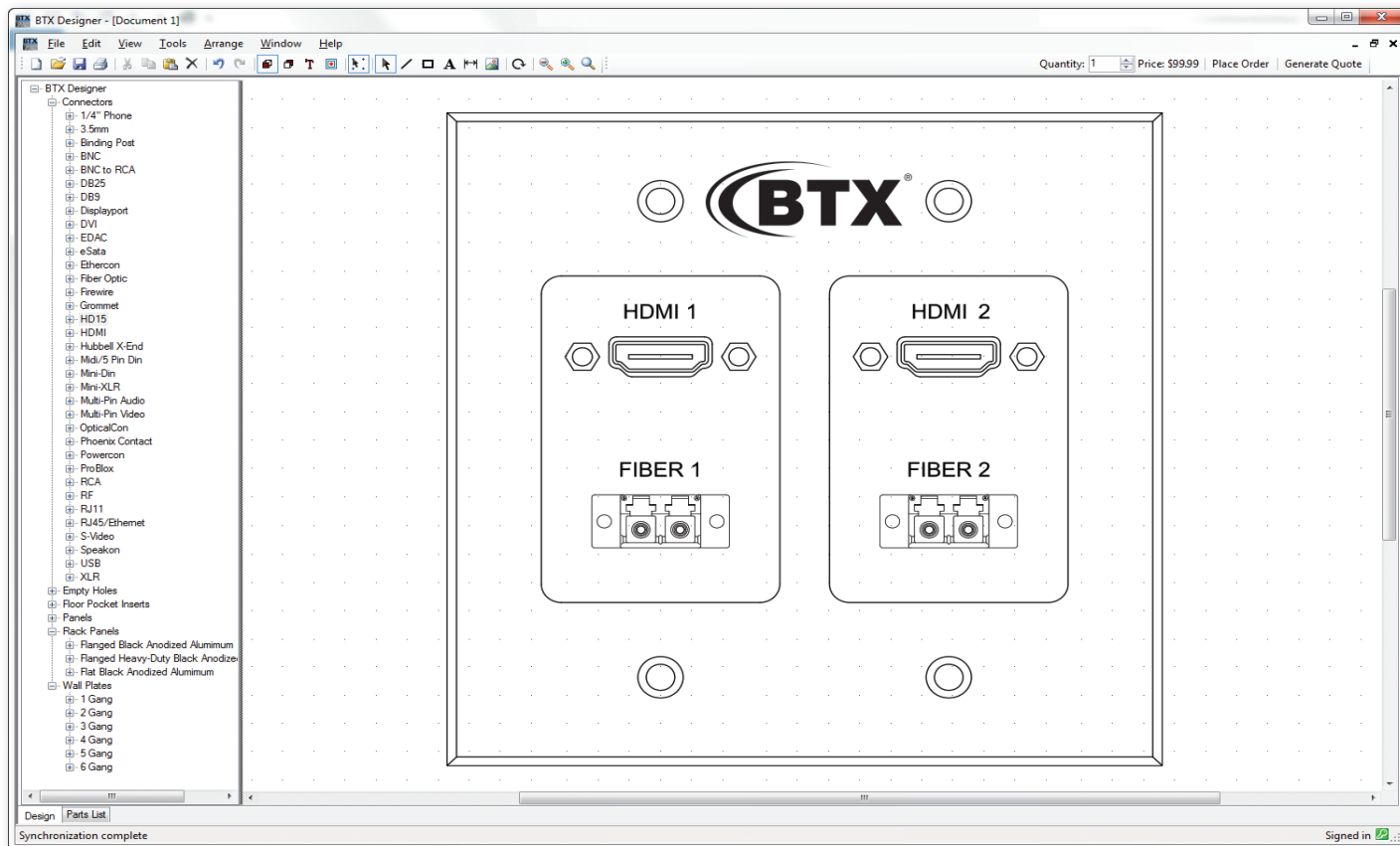
BTX Pro Plates & Panels

On Time • Pro Quality • Done Right

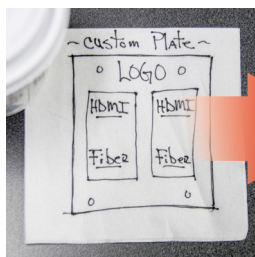
BTX is a recognized worldwide leader in connectors and connector design. And when it comes to our metalwork, BTX applies the same precise attention to detail as we do with our own connector designs. When you order custom plates and panels from BTX, you get the highest quality metalwork in the industry.

Plus, we have millions of connectors in our inventory ready to be loaded into your custom plates and panels immediately. This means amazingly fast turnaround on your custom work—typically 3-5 days!

Our BTX Pro Plates and Panels design software is the most simple, full-featured plate and panel software available – fully loaded with all the connector symbols you need for AV, broadcast and data applications.



TURN THIS...



...INTO THIS



Making this happen has never been easier:

Step 1: Download and install the FREE software at <http://tinyurl.com/btxprosoftware>

Step 2: Start designing by dragging plate, panel and connector symbols onto the canvas

Step 3: Approve the price shown in real time and decide on either a formal quote or to place an order – it is really that simple!

Step 4: Save your file in a .dwg format for reorders or to import into your CAD software.

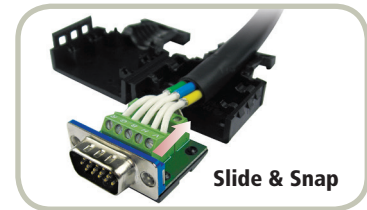


Award-Winning **MaxBlox** Solderless HD15 and DB9 EZ Termination System



Features:

- Rugged patented design with genuine Phoenix Contact terminal blocks
- Accommodates 16-30 AWG wire
- HD15 designed for use with VGA-UXGA signals
- HD15 connectors exhibit > 345MHz bandwidth
- HD15 contact insertion loss (.63db for male, .71db for female) @ 100MHz
- HD15 contact return loss (20.49db for male, 20.1db for female) @ 100MHz
- DB9 designed for use with RS-232 & RS-422 signals
- Low profile - less than 1" behind the plate
- Dramatically reduces installation time & costs
- Requires no soldering or crimping
- Includes shoulder screws and hex standoffs



Part #	Description
CD-MX9F	DB9 (f) to terminal block
CD-MX9M	DB9 (m) to terminal block
CD-MX15M	HD15 (m) to terminal block
CD-MX15F	HD15 (f) to terminal block

Part #	Description
CD-MX915H	Hood for MaxBlox D-Subs
CD-MX915HH	Half-Hood for MaxBlox D-Subs
TD-MXSD	Screwdriver for MaxBlox Series

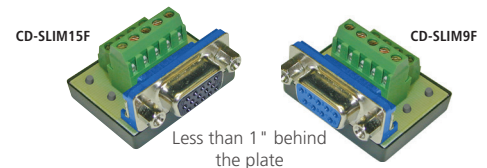


Solderless "SLIM" HD15 and DB9 Panel Mount Connectors

Features:

- Takes up less than 1" behind plate
- High resolution 5 conductor coax recommended
- Clearly labeled screw terminals
- HD15 perfect for VGA, SVGA, XGA
- DB9 ideal for RS-232 and RS-422 signals

Part #	Description
CD-SLIM15F	"Slim" Solderless HD15 female
CD-SLIM15M	"Slim" Solderless HD15 male
CD-SLIM9F	"Slim" Solderless DB9 female
CD-SLIM9M	"Slim" Solderless DB9 male



PROBLOX® & PROBLOX®-D

The BTX ProBlox® is an all-in-one connector system. ProBlox combines 16 coax and 26 audio/data/control contacts in a single multi-connector and the ProBlox-D offers 16 coax, 18 audio/data/control contacts and 2 CAT 5e connectors.



ProBlox	
CV-PB42P	Plug that houses female coaxial contacts. 16 video, 26 audio/control
CV-PB42PSC	Plug with slotted screw, houses female coaxial contacts. 16 video, 26 audio/control
CV-PB42R	Receptacle that houses male coaxial contacts. 16 video, 26 audio/control
CV-PBH	Hood accepts max cable bundle OD of 0.88" x 0.90"
CV-PBHL	Side entrance hood. Accepts max cable bundle OD of 1.05" x 0.90"
CV-PB42DC	Tethered dust cap for ProBlox (optional)
CV-PBPHK	Panel mounting hardware kit (optional)



ProBlox-D	
CV-PB50P	Plug that houses female coaxial contacts. 16 video, 18 audio/control, 2 CAT5e
CV-PB50R	Receptacle that houses male coaxial contacts. 16 video, 18 audio/control, 2 CAT5e
CV-PBDH	Hood for ProBlox-D
CV-PB50DC	Tethered dust cap for ProBlox-D (optional)
CV-PBPHK	Panel mounting hardware kit (optional)



ProBlox® & ProBlox®-D Audio & Video Contacts

Features:

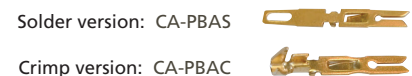
- True 75 ohm impedance
- 3 GHz bandwidth
- All-crimp 3 piece design
- Male Contacts - return loss 25dB to 3 GHz
- Female Contacts - return loss 21dB to 3 GHz
- Separate contact works with Belden 1855A, 1855P, 1395P and equivalents

ProBlox	
CV-PBVCM2	Male contact for BTX-RGB5P
CV-PBVCF2	Female contact for BTX-RGB5P
CV-PBVCMG	Male contact for Belden 1855
CV-PBVCFG	Female contact for Belden 1855
CA-PBAC	Audio/Control crimp contact, unisex (bag of 100)
CA-PBAS	Audio/Control solder contact, unisex (bag of 100)

Video Contacts

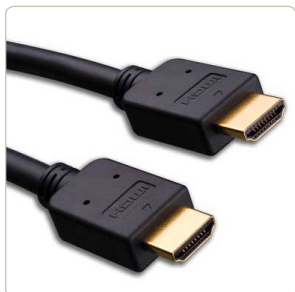


Audio Contacts



For the crimp and strip tools required to terminate ProBlox in the field, please visit:
http://www.btx.com/content.aspx?file=customerpages/problox_landing.htm

HDMI Assemblies



High Speed w/ Ethernet

These rugged everyday cables support uncompressed digital video, multi-channel audio and allow 3D over HDMI when connected to 3D devices. Manufactured with gold plated HDMI (type A to type A) connectors, these assemblies support 4Kx2K and 1080p video resolutions with a data speed transfer rate that exceeds 10.2 Gbps.

Part #	Description
BTX-HDMM01	HDMI male to male 1'
BTX-HDMM03	HDMI male to male 3'
BTX-HDMM06	HDMI male to male 6'
BTX-HDMM10	HDMI male to male 10'
BTX-HDMM12	HDMI male to male 12'
BTX-HDMM15	HDMI male to male 15'
BTX-HDMM20	HDMI male to male 20'
BTX-HDMM25	HDMI male to male 25'
BTX-HDMM35	HDMI male to male 35'
BTX-HDMM50	HDMI male to male 50'



Long Run High Speed

These Long Run High Speed HDMI cables not only go up to 65 ft. without the use of repeaters, they support up to 1080p HDTV resolutions. They incorporate gold plated connectors and a high quality wire construction that maintains high definition video resolutions plus multi-channel digital audio. These heavy duty cables are rugged yet extremely flexible.

Part #	Description
YD-HDXL24	HDMI male to male 24'
YD-HDXL32	HDMI male to male 32'
YD-HDXL49	HDMI male to male 49'
YD-HDXL65	HDMI male to male 65'



Long Run High Speed Plenum w/ Ethernet

These HDMI plenum rated cables are high-performance cables with molded HDMI connectors at both ends. HDMI standard supports high-definition video plus multi-channel audio in a single cable. High quality, heavy duty 24AWG wire is used in this cable. It is strongly recommended to use strain reliefs at the base of each HDMI connector.

Part #	Description
BTX-HDMMP25	Plenum HDMI male to male 25'
BTX-HDMMP35	Plenum HDMI male to male 35'
BTX-HDMMP50	Plenum HDMI male to male 50'
BTX-HDMMP75	Plenum HDMI male to male 75'



Long Run with RedMere Chip

HDMI Cables powered by RedMere Technology are 25% of the size of a standard HDMI cable. Because they are light and ultra-thin, they are easier to bend, route and without sacrificing signal quality.

Part #	Description
BTX-HDRM12	RedMere HDMI male to male (36 AWG) 12'
BTX-HDRM15	RedMere HDMI male to male (36 AWG) 15'
BTX-HDRM20	RedMere HDMI male to male (30 AWG) 20'
BTX-HDRM25	RedMere HDMI male to male (30 AWG) 25'
BTX-HDRM35	RedMere HDMI male to male (30 AWG) 35'
BTX-HDRM50	RedMere HDMI male to male (28 AWG) 50'
BTX-HDRM60	RedMere HDMI male to male (28/26 AWG) 60'
BTX-HDRM75	RedMere HDMI male to male (28/26 AWG) 75'
BTX-HDRM100	RedMere HDMI male to male (24 AWG) 100'



Kramer Plug & Play HDMI Active Optical Cable

Kramer's AOC/XL is a Plug and Play HDMI active optical cable (AOC) that has unique removable HDMI-A ends allowing the cable to be very easily pulled through small-size conduits. It supports resolutions up to 4K UHD over long cable runs (up to 100 meters) without the need for an external power supply or additional extenders. With its thin, flexible cable and small connector, the AOC/XL delivers ultimate reliability and convenience.

Part #	Description
KRA-CPAOCHXL33	Kramer Fiber Optic High-Speed Pluggable HDMI Cable, 33 Ft.
KRA-CPAOCHXL50	Kramer Fiber Optic High-Speed Pluggable HDMI Cable, 50 Ft.
KRA-CPAOCHXL66	Kramer Fiber Optic High-Speed Pluggable HDMI Cable, 66 Ft.
KRA-CPAOCHXL98	Kramer Fiber Optic High-Speed Pluggable HDMI Cable, 98 Ft.
KRA-CPAOCHXL131	Kramer Fiber Optic High-Speed Pluggable HDMI Cable, 131 Ft.
KRA-CPAOCHXL164	Kramer Fiber Optic High-Speed Pluggable HDMI Cable, 164 Ft.
KRA-CPAOCHXL197	Kramer Fiber Optic High-Speed Pluggable HDMI Cable, 197 Ft.
KRA-CPAOCHXL230	Kramer Fiber Optic High-Speed Pluggable HDMI Cable, 230 Ft.
KRA-CPAOCHXL295	Kramer Fiber Optic High-Speed Pluggable HDMI Cable, 295 Ft.
KRA-CPAOCHXL328	Kramer Fiber Optic High-Speed Pluggable HDMI Cable, 328 Ft.

HDMI Assemblies



Ultra Thin HDMI Assemblies

These HDMI ultra thin cable assemblies are 34 AWG, 4.5 mm OD and provide IP-based applications over HDMI, 4Kx2K and 1080p video resolutions and is UL listed.

Part #	Description
BTX-HDUT18	HDMI ultra thin cable 18"
BTX-HDUT03	HDMI ultra thin cable 3'
BTX-HDUT06	HDMI ultra thin cable 6'
BTX-HDUT10	HDMI ultra thin cable 10'



High Speed w/Ethernet – Mini

These assemblies allow you to connect cameras or camcorders with a Mini HDMI output to a display with an HDMI or Mini HDMI input. They feature gold plated HDMI (type A to type C) or HDMI (type C to type C) and supports 3D, Ethernet & audio return channel, multi-channel digital audio, deep color, HDCP and CEC controls.

Part #	Description
BTX-HD5001	HDMI Mini (type C) male to HDMI (type A) male 1.6'
BTX-HD5003	HDMI Mini (type C) male to HDMI (type A) male 3.3'
BTX-HD5006	HDMI Mini (type C) male to HDMI (type A) male 6.5'
BTX-HD5010	HDMI Mini (type C) male to HDMI (type A) male 9.8'
BTX-HD5201	HDMI Mini (type C) male to HDMI (type A) female 10"
BTX-HD5103	HDMI Mini (type C) male to male 3.3'
BTX-HD5106	HDMI Mini (type C) male to male 6.5'
BTX-HD5110	HDMI Mini (type C) male to male 9.8'



High Speed – Micro

These assemblies allow you to stream media, watch videos and view documents from a SmartPhone with a Micro HDMI output onto a display with an HDMI input. They feature gold plated HDMI (type A to type D) connectors, support 4Kx2K and 1080p video resolutions and support 3D and additional color spaces. UL listed.

Part #	Description
BTX-HD3003	HDMI Micro (type D) male to HDMI (type A) male 3'
BTX-HD3006	HDMI Micro (type D) male to HDMI (type A) male 6'
BTX-HD3012	HDMI Micro (type D) male to HDMI (type A) male 12'



Perfect Path HDMI Cables

Belden's Perfect Path HDMI Cables Bring Performance And Reliability Together To Solve One Of The Biggest Challenges for Pro Installers – Total Loss Of Signal.

700 Series – High Speed HDMI cable with locking connectors.

Key Features:

- Perfect Lock™ locking connectors with 25 lbs retention
- High Speed HDMI® cable
- 4k - 2k resolution (four times 1080p)
- 3D over HDMI® support
- CL2/FT4 rated for in-wall use
- Audio Return Channel



Part #	Description
BEL-HD7002	Locking HDMI Cable - 2'
BEL-HD7004	Locking HDMI Cable - 4'
BEL-HD7008	Locking HDMI Cable - 8'
BEL-HD70016	Locking HDMI Cable - 16'
BEL-HD70025	Locking HDMI Cable - 25'
BEL-HD70035	Locking HDMI Cable - 35'
BEL-HD70050	Locking HDMI Cable - 50'

Gefen High Speed HDMI Cables

Part #	Description
GEF-CABHDLCKR03MM	Gefen High Speed HDMI Cable with Ethernet and Mono-LOK male to male, 3 ft.
GEF-CABHDLCKR06MM	Gefen High Speed HDMI Cable with Ethernet and Mono-LOK male to male, 6 ft.
GEF-CABHDLCKR10MM	Gefen High Speed HDMI Cable with Ethernet and Mono-LOK male to male, 10 ft.
GEF-CABHDLCKR15MM	Gefen High Speed HDMI Cable with Ethernet and Mono-LOK male to male, 15 ft.



HDMI Pigtails Adapters

Part #	Description
BTX-HDFFPT	HDMI (f-f) 6" Pigtail Adapters - (to the right)
HUB-HDT	HDMI Panel mount coupler with 3" tail and locking HDMI (to the far right)

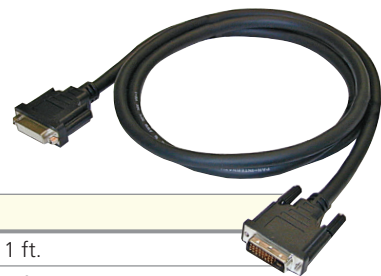


Standard DVI Digital Dual Link

Our standard DVI Digital Dual Link cable assemblies connect any DVI digital display to any computer, switcher, or splitter. Supporting both single and dual link high-speed DVI signals, these rugged, double shielded cables are ideal for applications up to 15 ft. Assemblies are UL listed.

Features:

- Supports both single & dual link DVI signals
- Double shielding ensures signal integrity
- PVC jacket & molded connectors (with integrated thumbscrews) ensure durability



DVI - Male to Male

YD-DVI1001	DVI-D Dual Link Cable, M-M, 28 awg, 1 ft.
YD-DVI1003	DVI-D Dual Link Cable, M-M, 28 awg, 3 ft.
YD-DVI1004	DVI-D Dual Link Cable, M-M, 28 awg, 4 ft.
YD-DVI1006	DVI-D Dual Link Cable, M-M, 28 awg, 6 ft.
YD-DVI1010	DVI-D Dual Link Cable, M-M, 28 awg, 10 ft.
YD-DVI1015	DVI-D Dual Link Cable, M-M, 28 awg, 15 ft.
YD-DVI1025	DVI-D Dual Link Cable, M-M, 28 awg, 25 ft.

DVI - Male to Female

YD-DVI2006	DVI-D Dual Link Cable, M-F, 28 awg, 6 ft.
YD-DVI2010	DVI-D Dual Link Cable, M-F, 28 awg, 10 ft.
YD-DVI2015	DVI-D Dual Link Cable, M-F, 28 awg, 15 ft.

Super Low Attenuation / Long Run DVI

Engineered for superior performance, our Super Low Attenuation DVI Cables transmit a DVI-D Single Link signal up to 65 ft. without the need for a repeater. These assemblies feature the most advanced wire construction and design available, with 100Ω impedance, excellent low skew characteristics and the super low capacitance specs needed for long distance DVI transmission. Plus, triple shielding ensures extremely low signal loss and interference. Finally, a super-flexible, yet durable jacket and metal connectors with a rugged outer molding make our cables the most robust DVI assemblies on the market.

Features:

- Single cable solution for transmission of DVI signals up to 65 ft.
- Advanced wire construction & design with perfect 100Ω impedance, excellent skew characteristics, super low capacitance, & triple shielding
- Rugged, yet extremely flexible cable jacket & metal connectors with outer plastic molding ensure durability

DVI Male to Male	DVI Male to Female	Length	Max Resolution @ 60 HZ
YD-DVIXL16MM	YD-DVIXL16MF	16 ft.	1600 x 1200
YD-DVIXL32MM	YD-DVIXL32MF	32 ft.	1600 x 1200
YD-DVIXL49MM	YD-DVIXL49MF	49 ft.	1280 x 1024
YD-DVIXL65MM	YD-DVIXL65MF	65 ft.	1024 x 768



DVI to VGA Assemblies

These adapter assemblies connect a VGA source to a DVI analog display.

Features

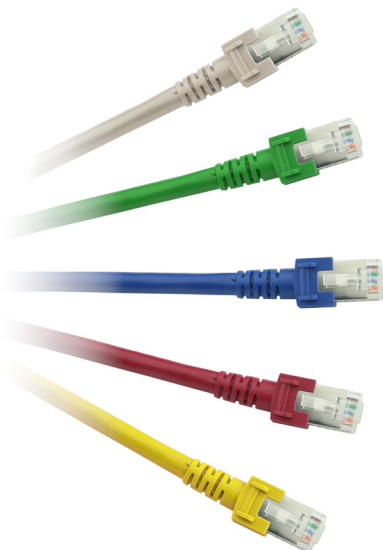
- Double shielding ensures signal integrity
- Robust, flexible PVC jacket with molded connectors
- HD15 (m) to DVI-A (m)

Part #	Length
YD-DVI3006	6 ft.
YD-DVI3010	10 ft.
YD-DVI3015	15 ft.
YD-DVI3025	25 ft.
YD-DVI3050	50 ft.
YD-DVI3100	100 ft.



Category 5e Data Assemblies

BTX Category 5e data assemblies are ideal for connecting IP addressable equipment (including computers, digital cameras, video conferencing gear, etc.) to a hub. Cables are comprised of 4 pair, 24 AWG cable and come in a wide variety of colors with matching boots. Custom lengths are also available - please contact our sales team for information.



CAT 5e Non- Shielded							
LENGTH	Black	Blue	Gray	Green	Red	White	Yellow
3 ft.	YD-603BK	YD-603BL	YD-603GY	YD-603GR	YD-603RE	YD-603WH	YD-603YE
7 ft.	YD-607BK	YD-607BL	YD-607GY	YD-607GR	YD-607RE	YD-607WH	YD-607YE
10 ft.	YD-610BK	YD-610BL	YD-610GY	YD-610GR	YD-610RE	YD-610WH	YD-610YE
14 ft.	YD-614BK	YD-614BL	YD-614GY	YD-614GR	YD-614RE	YD-614WH	YD-614YE
20 ft.	YD-620BK	YD-620BL	YD-620GY	YD-620GR	YD-620RE	YD-620WH	YD-620YE
25 ft.	YD-625BK	YD-625BL	YD-625GY	YD-625GR	YD-625RE	YD-625WH	YD-625YE
50 ft.	YD-650BK	YD-650BL	YD-650GY	YD-650GR	YD-650RE	YD-650WH	YD-650YE
75 ft.	YD-675BK	YD-675BL	YD-675GY	YD-675GR	YD-675RE	YD-675WH	YD-675YE
100 ft.	YD-6100BK	YD-6100BL	YD-6100GY	YD-6100GR	YD-6100RE	YD-6100WH	YD-6100YE

CAT 5e Shielded							
LENGTH	Black	Blue	Gray	Green	Red	White	Yellow
3 ft.	YD-603BKS	YD-603BLS	YD-603GYS	YD-603GRS	YD-603RES	YD-603WHS	YD-603YES
7 ft.	YD-607BKS	YD-607BLS	YD-607GYS	YD-607GRS	YD-607RES	YD-607WHS	YD-607YES
14 ft.	YD-614BKS	YD-614BLS	YD-614GYS	YD-614GRS	YD-614RES		YD-614YES
25 ft.	YD-625BKS	YD-625BLS	YD-625GYS	YD-625GRS	YD-625RES	YD-625WHS	YD-625YES

Category 6 Data Assemblies

BTX Category 6 data cables meet or exceed industry standards of the Category 6 addition to the TIA-568 standard. They support 100 megabit and gigabit ethernet and are available in four colors (blue, gray, green, & red) with matching strain relief boots. For shielded CAT6 cables, please contact our sales team.



CAT 6 Non- Shielded						
LENGTH	Blue	Grey	Green	Red	Black	White
3 ft.	YD-6603BL	YD-6603GY	YD-6603GR	YD-6603RE	YD-6603BK	YD-6603WH
7 ft.	YD-6607BL	YD-6607GY	YD-6607GR	YD-6607RE	YD-6607BK	YD-6607WH
14 ft.	YD-6614BL	YD-6614GY	YD-6614GR	YD-6614RE	YD-6614BK	YD-6614WH
25 ft.	YD-6625BL	YD-6625GY	YD-6625GR	YD-6625RE	YD-6625BK	YD-6625WH
50 ft.	YD-6650BL	YD-6650GY	YD-6650GR	YD-6650RE	YD-6650BK	YD-6650WH
100 ft.	YD-66100BL	YD-66100GY	YD-66100GR	YD-66100RE	YD-66100BK	YD-66100WH

CAT 6A Shielded		
LENGTH	Blue	Gray
7 ft.	YD-6607BLUSA	YD-6607GYSA
15 ft.	YD-6615BLUSA	YD-6615GYSA
25 ft.	YD-6625BLUSA	YD-6625GYSA
50 ft.	YD-6650BLUSA	YD-6650GYSA
100 ft.	YD-66100BLUSA	YD-66100GYSA

"EZDVI" DVI-A to 5 BNC Breakout

This DVI adapter cable comes in handy when you need to breakout DVI to RGBHV. DVI-A(m)-5 BNC(f) 75Ω.

Features:

- Low-loss cable & 75Ω female BNCs
- Easily mounts in a wall plate or panel
- 1 ft. long

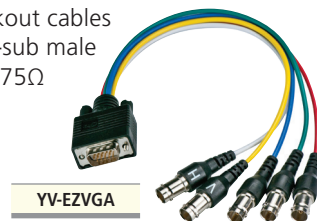


"EZVGA" VGA to 5 BNC Breakout

Our professional, low-loss breakout cables feature a high density 15 pin D-sub male or female on one end and five, 75Ω female BNCs on the other end.

Features:

- 12 in. length
- H-White, V-Yellow
- Low-loss cable & 75Ω female BNCs



Mini-DisplayPort Adapters

These Mini-DisplayPort adapters connect MacBook, MacBook Pro or MacBook Air with mini-DisplayPort to Apple Cinema displays, flat panel monitors, HDTVs, DVD players or projectors with HDMI, DVI or VGA video ports.



Neutrik opticalCON® Advanced

Neutrik's opticalCON® line is based on standard optical LC-Duplex connections and feature a rugged-body, high-performance fiber contacts and a unique shutter design to protect against dust and dirt. This group of products provides maximum reliability and has gained wide acceptance in the Pro Audio, A/V and Rental & Staging markets.



FIBER / CONNECTOR OPTIONS

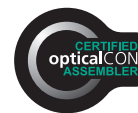
2FOMM = DUO Multi-mode	4FOSM = QUAD Single-mode
2FOSM = DUO Single-mode	BOSM = Breakout Single-mode
2FHSM = DUO SMPTE (Single-mode Only)	BOMM = Breakout Multi-mode 50/125
4FOMM = QUAD Multi-mode	

CONNECTOR OPTIONS

LC
SC
ST

REEL / SPOOLING OPTIONS

R31 = Small Reel (14.45")
R38 = Medium Reel (19.33")
R52 = Large Reel (21.85")



Neutrik's opticalCON® is available as MTP. Please contact a sales associate for more information.

Neutrik opticalCON® LITE

opticalCON® LITE is a semi-rugged fiber optic connection for a wide variety of applications: its lightweight, compact design, robust housing and high mating cycles provide a safe and cost-effective connection. opticalCON® LITE is compatible with the opticalCON® ADVANCED chassis connectors, using a similar push-pull locking mechanism and offering the same IP65 environmental protection. This is a great solution for semi-permanent or permanent installations such as Digital Signage, Rack to Rack and Inter-Rack connectivity, Industrial applications such as robotics and solar farms.



FIBER / CONNECTOR OPTIONS

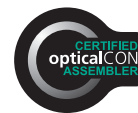
2FOMM = DUO Multi-mode	4FOSM = QUAD Single-mode
2FOSM = DUO Single-mode	MTP = 12 channel
4FOMM = QUAD Multi-mode	

CONNECTOR OPTIONS

LC
SC
ST

REEL / SPOOLING OPTIONS

R31 = Small Reel (14.45")
R38 = Medium Reel (19.33")
R52 = Large Reel (21.85")



Tactical Fiber Snake Cables

These multi-strand tactical fiber assemblies are designed for heavy handling in harsh commercial environments where deployment and re-deployment is required.



FIBER / CONNECTOR OPTIONS

SD (Tactical, SM 9um, Distribution)	MB50 (Tactical, MM 50um, Breakout)
SB (Tactical, SM 9um, Breakout)	MD62 (Tactical, MM 62.5um, Distribution)
MD50 (Tactical, MM 50um, Distribution)	MB62 (Tactical, MM 62.5um, Breakout)

NUMBER OF FIBER STRANDS

2, 4, 6, 8, 10, 12, 18, 24

1ST END CONNECTOR STYLE

LC DLC (Duplex)
SC DSC (Duplex)
ST

2ND END CONNECTOR STYLE

LC DLC (Duplex)
SC DSC (Duplex)
ST

SMPTE Hybrid Fiber Broadcast Assemblies



The LEMO 3K.93C connector system has proven itself in many HD applications in studio and stadium installations to OB van use. The use of fiber optics means that transmission of HD can be made over long distances from the camera to the base station. The performance of the interconnection is critical if this benefit of fiber is to be fully exploited. LEMO, who originally designed and developed the SMPTE 304/311 world standard, knows what is critical for the highest performance and quality.

REEL / SPOOLING OPTIONS

R31 = Small Reel (14.45")
R38 = Medium Reel (19.33")
R52 = Large Reel (21.85")

Reel Selection Guide

Type	GT235	GT310	GT380	GT450
SMPTE	Up to 100 ft.	Up to 175 ft.	Up to 375 ft.	Up to 500 ft.



Fiber Optic Assemblies - Standard Length

These multi-mode LC, ST and SC fiber optic assemblies are manufactured with 9/125, 50/125 and 62.5/125 μm fiber optic cable and rugged connectors with reliable machined ferrules.



FIBER OPTIONS

SI = Simplex
DU = Duplex

CONNECTOR OPTIONS

LC = LC to LC ST = ST to ST
STLC = ST to LC SC = SC to SC
SCLC = SC to LC STSC = ST to SC

LENGTH OPTIONS

1 = 1 Meter 5 = 5 Meter 75 = Feet
2 = 2 Meter 10 = 10 Meter 100 = Feet
3 = 3 Meter 50 = Feet

MODE

S=Single-mode
M=Multi-mode

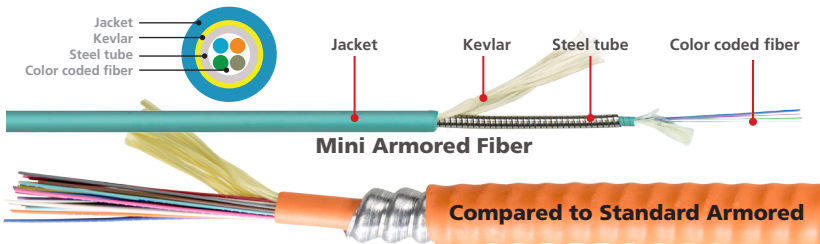
BTX is your resource for all of your fiber cable, connectors and adaptors.

- Multi-Strand Distribution and Loose Tube Fiber
- Bulk Simplex, Duplex Riser and Plenum Cables
- Breakout and Distribution Bulk Cable
- Mini Armored Fiber Optic Cable
- **SENKO** | LC Fiber Connectors & Adapters
- **SENKO** | SC/ST Fiber Connectors & Adapters
- **AFL** | FAST™ Connectors
- **AFL** | FAST™ Connector Tool Kit
- **Belden** | Connectors



Mini Armored Fiber Optic Cable

This quality fiber optic cable is armored. Approximately 65% smaller and 75% lighter than typical fiber optical cables. BTX will provide custom solutions for bulk and pre-terminated Micro Armor Fiber™. Customized features include jacket material and color, length and terminations.



Part #	Description
BTX-FOTA40S2	Mini Armored 4 Fiber SM 900um Yellow
BTX-FOTA60S2	Mini Armored 6 Fiber SM 900um Yellow
BTX-FOTA60S2BK	Mini Armored 6 Fiber SM 900um Black I/O
BTX-FOTA120S2	Mini Armored 12 Fiber SM 250um Yellow
BTX-FOTA120S2BK	Mini Armored 12 Fiber SM 250um Black I/O
BTX-FOTA40M3	Mini Armored 4 Fiber 50/125 OM3 900um Aqua
BTX-FOTA60M3	Mini Armored 6 Fiber 50/125 OM3 900um Aqua
BTX-FOTA60M3BLK	Mini Armored 6 Fiber 50/125 OM3 900um Black I/O
BTX-FOTA120M3	Mini Armored 12 Fiber 50/125 OM3 250um Aqua
BTX-FOTA120M3BK	Mini Armored 12 Fiber 50/125 OM3 250um Black I/O



fiberFAN by BTX

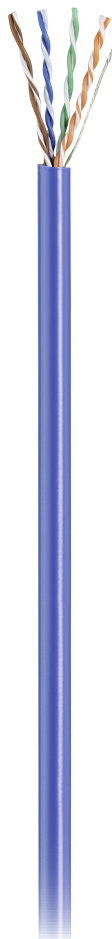
In-line Solution for opticalCON Duo Breakouts to LC, SC and ST

BTX now offers robust in-line solutions for connecting opticalCON Duo to LC, SC and ST connectors. These adapters employ a Neutrik opticalCON chassis connector in a robust aluminum housing on one end and a 3 foot cable with fan-out to the connector of your choice on the other. This maintains the ruggedized purpose of the opticalCON system while allowing direct connection to your end point equipment. These are perfect for field use in rental and staging, broadcast and many other applications.



SINGLE-MODE SERIES		
BTX-FFOCDSCSM	fiberFAN opticalCON Duo to SC	1' fanout (3' total)
BTX-FFOCDSTSM	fiberFAN opticalCON Duo to ST	1' fanout (3' total)
BTX-FFOCDLCSM	fiberFAN opticalCON Duo to LC	1' fanout (3' total)
MULTI-MODE SERIES		
BTX-FFOCDSCMM	fiberFAN opticalCON Duo to SC	1' fanout (3' total)
BTX-FFOCDSTMM	fiberFAN opticalCON Duo to ST	1' fanout (3' total)
BTX-FFOCDLCMM	fiberFAN opticalCON Duo to LC	1' fanout (3' total)

Belden Cables and Connectors | CAT 5e/6



Category 5e - 160 MHz				Outer Jacket Colors Available									
Part #	Rating	Shielding	Cable Mount Connector	BK	BL	GR	GY	OR	PK	PU	RE	WH	YE
1212	Non Plenum	Unshielded	1 - 10	X	X	X	X	X				X	X
1212F	Non Plenum	Foil	3, 6, 9	X	X	X	X	X			X	X	X
1213	Plenum	Unshielded	1 - 10	X	X	X	X	X	X	X		X	X
1213F	Plenum	Foil	3, 6, 9	X	X	X	X	X			X	X	X

Category 6 - 250 MHz				Outer Jacket Colors Available									
Part #	Rating	Shielding	Cable Mount Connector	BK	BL	GR	GY	OR	PK	PU	RE	WH	YE
2412	Non Plenum	Unshielded	5, 7	X	X	X	X	X		X		X	X
2412F	Non Plenum	Foil	6, 9	X	X	X	X	X			X	X	X
2413	Plenum	Unshielded	5, 7		X	X	X	X	X	X	X	X	X
2413F	Plenum	Foil	6, 9	X	X	X	X	X			X	X	X

Category 6A - 625 MHz				Outer Jacket Colors Available									
Part #	Rating	Shielding	Cable Mount Connector	BK	BL	GR	GY	OR	PK	PU	RE	WH	YE
10GX12	Non Plenum	Unshielded	5	X	X	X	X	X		X	X	X	X
10GX52F	Non Plenum	Foil	8	X	X		X					X	X
10GX13	Plenum	Unshielded	5	X	X	X	X			X		X	X
10GX53F	Plenum	Foil	8	X	X		X					X	X

Category 6A BONDED - 625 MHz				Outer Jacket Colors Available									
Part #	Rating	Shielding	Cable Mount Connector	BK	BL	GR	GY	OR	PK	PU	RE	WH	YE
10GX32	Non Plenum	Unshielded		X		X					X	X	X
10GX62F	Non Plenum	Foil	X	X		X					X	X	X
10GX33	Plenum	Unshielded		X		X					X	X	X
10GX63F	Plenum	Foil	X	X		X					X	X	X

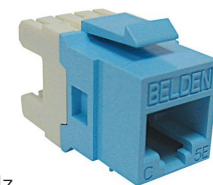
Cable Mount Category Connectors

Type #	Part #	Description	Type #	Part #	Description
1	CD-EZRJ455E	RJ45 CAT 5e EZ-Term Cable Plug	6	CD-CAT6MCLB	Shielded RJ45 Plug for CAT 6 and CAT 6A
2	CD-EZRJ456EA	EZ-RJ45 CAT 6+ Connector	7	CD-CAT6MMT	CAT 6 Plug for Belden MediaTwist
3	CD-EZRJ456S	EZ-RJ45 Plug for Shielded CAT 6	8	CD-CAT6AM	CAT 6A Plug for Belden 10GX13 Cable
4	CD-EZRJ456SEG	EZ CAT 5e and CAT 6 Shielded Plug w/ External Ground	9	CD-CAT6SC	Shielded CAT 6 Connector
5	CD-CAT6M	CAT 6 Modular (m) Connector	10	CD-5998UL	Modular Plug 8 Conductor/50 Micron

Belden | KeyConnect® Jacks

Belden's CAT 5e modular jacks are designed with standard 110 punch-down UTP connections and deliver guaranteed performance up to 160 MHz.

Belden's CAT 6+ KeyConnect modular jacks exceed all parameters specified in the TIA Category 6 standard. They are designed with standard 110 punch-down UTP connections and deliver guaranteed performance up to 300 MHz.



Color	CAT5e	CAT6+	Color	CAT5e	CAT6+	Color	CAT5e	CAT6+
Gray	BEL-AX101307	BEL-AX101318	Red	BEL-AX104183	BEL-AX104190	Orange	BEL-AX101311	BEL-AX101322
Almond	BEL-AX101308	BEL-AX101319	Yellow	BEL-AX104184	BEL-AX104191	Red	BEL-AX101312	BEL-AX101323
White	BEL-AX101309	BEL-AX101320	Green	BEL-AX104185	BEL-AX104192	Yellow	BEL-AX101313	BEL-AX101324
Black	BEL-AX101310	BEL-AX101321	Blue	BEL-AX104186	BEL-AX104193	Green	BEL-AX101314	BEL-AX101325
Ivory	BEL-AX103079	BEL-AX103076	Purple	BEL-AX104187	BEL-AX104194	Blue	BEL-AX101315	BEL-AX101326
Orange	BEL-AX104182	BEL-AX104189				Purple	BEL-AX101316	BEL-AX101327

Belden Cables | Video, Audio, Speaker & Control

Belden is a world leader in the manufacture of cable for a wide range of audio, video, data and control applications. Because each SKU is available in many colors, lengths and put-up styles, it is impossible to list them all here. Belden manufactures thousands of additional products. For a broader selection of Belden products available, please visit www.btx.com.
BTX is a Belden Certified Cable Assembler. Let us build your next custom assembly.

VIDEO

Non-Plenum	Plenum	Use	Size	Construction
1855A	1855P	install	23 awg	Mini-Coax: Solid BC HDTV SDI 75 ohm
1505A	1506A	install	20 awg	RG59-Coax: Solid BC HDTV SDI 75 ohm
1694A	1695A	install	18 awg	RG6-Coax: Solid BC HDTV SDI 75 ohm
7731A	7732A	install	14 awg	RG11-Coax: Solid BC HDTV SDI 75 ohm
1505F	X	deployment	22 awg	RG59-Coax: Stranded BC HDTV SDI 75 ohm
1694F	X	deployment	19 awg	RG6-Coax: Stranded BC HDTV SDI 75 ohm
1857A	X	studio	22 awg	RG59-Triax: Stranded BC HDTV SDI 75 ohm
1858A	1859A	studio/install	20 awg	RG11-Triax: Stranded BC HDTV SDI 75 ohm
5339B5	633938	install	18 awg	RG6-CATV Coax: Solid BC, Dual Shield 75 ohm
5339Q5	6339Q8	install	18 awg	RG6-CATV Coax: Solid BC, Quad Shield 75 ohm
9116	9116P	install	18 awg	RG6-CATV Coax: Solid CCS, Dual Shield 75 ohm

AUDIO

Non-Plenum	Plenum	Use	Size	Construction
9451	9451P	install	22 awg	1 pair, stranded conductors, foil shield with drain wire
X	9451PS4	install	22 awg x 4	4 x 1 pair (splined), stranded conductors, foil shield with drain wire
1800B	1801B	install	24 awg	1 pair, 110 Ohm AES/EBU, stranded conductors, foil shield with drain wire
8412	X	microphone	20 awg	2 non-paired stranded conductors, 95% TC braid
1192A	X	microphone	24 awg	4 conductor (quad), stranded conductors, 95% TC braid
1800F	X	microphone	24 awg	2 non-paired stranded conductors, 95% TC braid

SPEAKER

Non-Plenum	Plenum	Use	Construction
5000UE	6000UE	speaker	(2) X 12 awg, Unshielded
5100UE	6100UE	speaker	(2) X 14 awg, Unshielded
5200UE	6200UE	speaker	(2) X 16 awg, Unshielded
5300UE	6300UE	speaker	(2) X 18 awg, Unshielded
5400UE	6400UE	speaker	(2) X 20 awg, Unshielded
5500UE	6500UE	speaker	(2) X 22 awg, Unshielded
5000FE	6000FE	audio	12 awg 1 Pair, Shielded
5100FE	6100FE	audio	14 awg 1 Pair, Shielded
5200FE	6200FE	audio	16 awg 1 Pair, Shielded
5300FE	6300FE	audio	18 awg 1 Pair, Shielded

CONTROL

Non-Plenum	Plenum	Use	Construction
1502R	1502P	install	22 awg + (2) 18 awg
8723	82723	install	(2) 22 awg



Neutrik® manufactures professional grade connector products for wireless audio, audio, video, data and fiber applications.



NEUTRIK®

Explore the full-line of Neutrik products at www.btx.com

- XLR
- powerCON®
- XIRIUM PRO®
- speakON®
- opticalCON®
- etherCON®

Switchcraft® manufactures ProAV Jacks, Plugs, Connectors, Patchbays, DI Boxes, Mic Splitters, Cable Assemblies and Accessories for Live Sound, Recording, Broadcast and Systems Integration.

Switchcraft®



SWI-AAA3M



SWI-EHDB9FFB



SWI-EHMDP2



SWI-EHUSB3ACAB



SWI-EHDMI2B



SWI-EHLC2



SWI-3502



SWI-EH35MMSSCB



SWI-EHRJ45P6S



SWI-EHRJ45PSE



SWI-EHRJ45P6SIDC



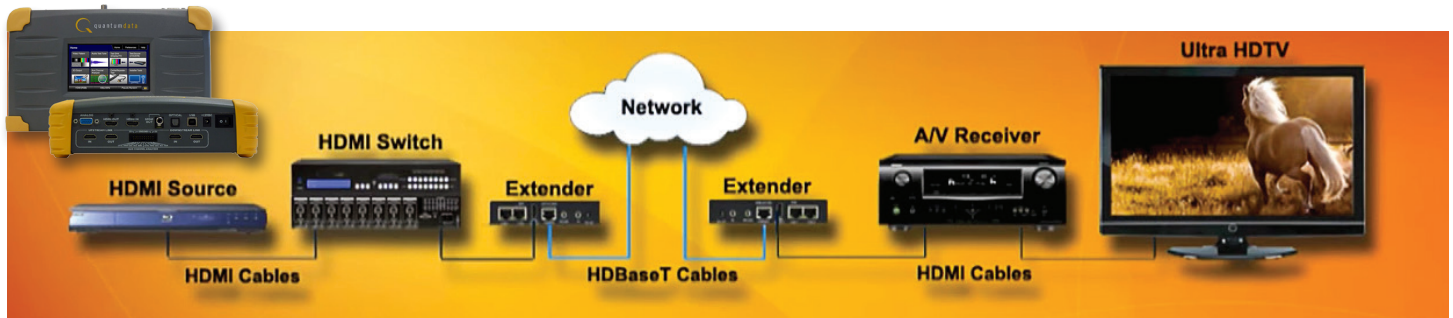
SWI-EHUSBABX



Switchcraft Phantom Power Bluetooth Audio Receiver

The AudioStix is a small, wireless audio receiver that utilizes 4.0 Bluetooth technology to stream audio from any Bluetooth enabled device. The AudioStix is powered by phantom power. If phantom power is not available, the SWI-318BT is equipped with an Aux 5V, Micro USB port for external power.

Quantum Data 780 Series of Handheld Video Generators/Analyzers for HDMI Test 4K Ultra HD HDMI 2.0 Sources



780 Handheld Test Instruments | QUA-0000226

The 780 handheld test instrument for HDMI® is a battery-powered, portable video and audio generator and HDMI analyzer. It tests pixel rates up to 165MHz and TMDS rates up to 225MHz for deep color on the output and pixel rates up to 150MHz on the HDMI input.



780BH Video Generator / Analyzer | QUA-0000240

The 780BH Video Generator / Analyzer includes all of the features of the 780AH but also includes EDID emulation for testing HDMI 2.0 sources and distribution devices and tests HDMI 2.0 sinks with 21:9 formats



780AH Handheld Test Instrument | QUA-0000239

The 780AH Video Generator / Analyzer is a battery-powered, portable video and audio generator and HDMI analyzer. It tests pixel rates up to 300 MHz for testing 4K Ultra HD HDMI 2.0 devices at 50/60Hz using 4:2:0 pixel encoding on sources and sinks.



780C Multi-Interface Interoperability Tester | QUA-0000236

The 780C Multi-Interface Interoperability Tester is a handheld 7" touch screen digital video generator and analyzer that enables you to run tests on various digital video devices and network distribution devices on site or in the R&D lab. The 780C is equipped with multiple interface types including HDMI, HDBaseT, 3G-SDI and component analog.



780D HDMI Protocol Analyzer / Generator | QUA-0000242

The 780D 600MHz HDMI Protocol Analyzer / Generator for UHD Testing is a handheld 7" touch screen digital video generator and analyzer that enables you to run tests on various digital video devices and network distribution devices on site or in the R&D lab.



Fiber Optic Loss Test Kit

The AFL-SMLP55 combines the AFL-OLS4 Quad MM/SM Source with the AFL-OPM5 Power Meter. It can store files and organize data for uploading to a PC. TRM Reporting software (included with kit) is a powerful reporting tool enabling technicians to organize test data, apply test rules for pass/fail analysis and build custom test reports using included industry accepted templates.

AFL-SMLP55 AFL Fiber Loss Test Kit



INTEGRATION ESSENTIALS

Middle Atlantic | What Great Systems Are Built On

Middle Atlantic has a wide and varied product selection – from racks and rack equipment to power solutions and custom built furniture. The products below are a representation of what is available. You can find all Middle Atlantic products at www.btx.com or contact BTX for more information.

Product Line Includes:

- Fully Welded Racks
- Knock-Down Racks
- Slide Out Racks
- Wall-Mounted Racks and Cabinets
- Studio Furniture
- Monitor Walls and Display Carts
- Credenzas and Lecterns



DYMO | XTL Series

The XTL series prints 1/4" (6 mm) up to 2" (24 mm) durable labels including continuous length tape, laminated wire/cable wraps, heat-shrink tubes and pre-sized labels. For a full list of printers and labels, contact a BTX sales representative or visit www.btx.com.



Power | IEC Power Cords, Power Strips and Surge Suppressors

BTX carries a full inventory of power products that will keep your projects on track and uninterrupted.



TechFlex | Expandable Sleeving

We offer standard, scissor cut and wrappable expandable sleeving products.



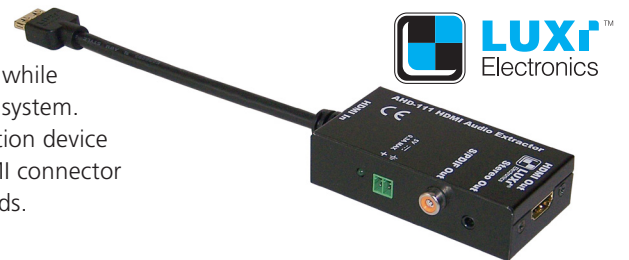
Cable Ties | Premium/Hook & Loop

Regardless of your projects requirements, we have you covered with cable ties for all applications.



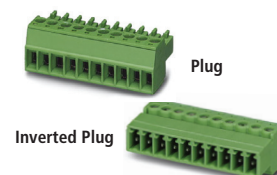
LUXI | HDMI Audio Extractor

The **LUX-AHD111** allows you to take your HDMI signal directly to the display while extracting the audio to send to either a power amplifier or whole house audio system. Simply plug in at the end of the source cable and the other end to the destination device and then run your audio cable to the amplifier. The patented Luxi locking HDMI connector on the female input and male output ensures a secure connection on both ends.



Phoenix | Contact Combicon Connectors

These Phoenix Contact Combicon connectors are commonly used as the I/O for many broadcast and AV manufacturers' products. A wide variety of connectors are readily available. If you don't see what you need, please call.





BTX Technologies | Partial Line Card



ALLEN AVIONICS, INC.



A/V Labor On-Demand | ✓Affordable ✓Local ✓Easy

BTX has teamed up with an experienced A/V and IT staffing company whose labor resources are where your job is.



These labor resources report directly to your on-site project manager, and depending on what you need, can:

- Pull and Terminate Cable
- Hang Projectors
- Mount Displays
- Rack and Stack
- Test AV Equipment
- Set Up and Tear Down Live Events
- Move Materials
- Wire Broadcast Equipment
- Wire Networking Equipment
- General Project Implementation



BTX Technologies, Inc.

BTX distribution centers located in
Hawthorne, NY and Salt Lake City, UT

BTX sales offices nationwide

business hours:

8:30 a.m. – 7:00 p.m. ET

phone:

800.666.0996 or 914.592.1800

fax:

800.569.4244 or 914.592.0800

www.btx.com | sales@btx.com

This catalog is a partial representation
of our complete offering. To order from
our full selection of products, please visit
www.btx.com.

2016 A/V Catalog

\$10.00 | All catalog information subject to change without notice. ©2016 BTX Technologies, Inc. ALL RIGHTS RESERVED. | Rev. 06.01.2016

All trademarks are the property of their respective owners.