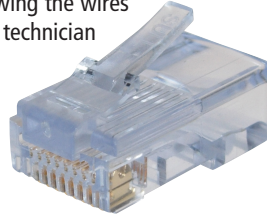


Cat 5e Connectors & Cables

EZ-RJ45® Cat 5e Connector

The CD-EZRJ455E connector simplifies twisted-pair terminations by allowing the wires to be inserted through the connectors and out the front. This allows the technician to easily verify the proper wiring order. Electrical performance of the termination is optimized by pulling the connector down over the cable jacket and seating it tightly in the rear of the connector. Reducing the distance between the wire twists and contacts improves performance. Reduces scrap, no wasted crimps. More reliable, higher performance. Crimp with the TD-EZRJ45CT... crimps and trims in one cycle.



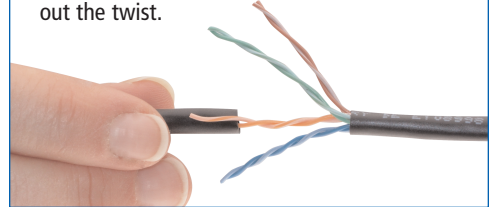
Features

- Works with solid or stranded wire
- Simple one piece design...no bars or liners
- FCC compliant, UL rated
- Use in Cat 5e compliant data networks
- Easy to verify wire sequence
- Faster terminations

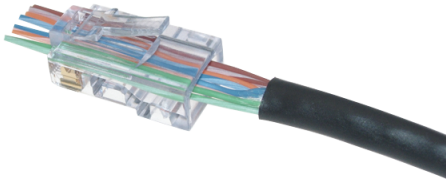
Part #	Description
CD-EZRJ455E	EZ-RJ45 plug for Cat 5e Bag of 100
CD-EZRJ11	EZ-RJ11 plug Bag of 100
CD-EZRJ456	EZ-RJ45 plug for Cat 6 Bag of 100
CD-EZ6BOOT	Required strain relief boot for EZ-RJ45 Cat 6 connectors Bag of 100
TD-EZRJ45PROCT	Crimp Tool for all EZ-RJ connectors
TD-EZRJ45BL	Replacement Blades for EZ-RJ Crimp Tool

Free Tool: Twisted-Pair Separator

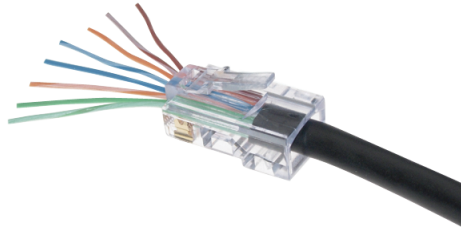
1. Save the cable jacket when you remove it, exposing the 4 pairs to prep for terminating.
2. Slip the small piece of cable jacket over one wire at a time.
3. Open up each twisted-pair by pushing and turning in the opposite direction of the twist.
4. When you get to the bottom, pinch the wire inside the jacket and pull upwards to straighten out the twist.



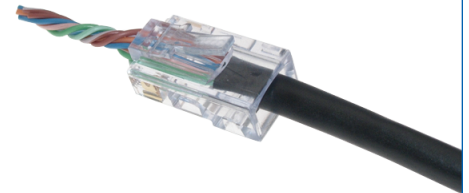
- Insert wires through the connectors and out the front.



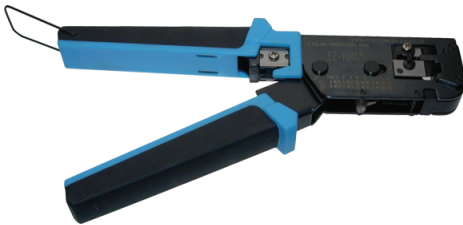
- Verify the proper wiring order.



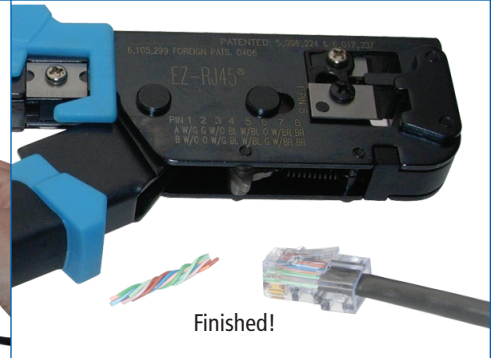
- Twist wires to pull the connector down over the cable jacket and seat it tightly in the rear of the connector.



- Use the TD-EZRJ45CT crimp tool.



- Compress tool and pull off excess wires before releasing. The tool terminates and cuts in one quick and easy operation.



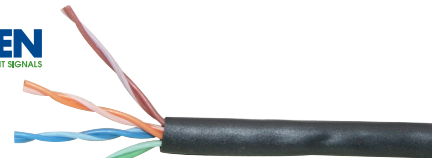
Belden DataTwist® Category 5e Cable

Belden DataTwist® cable features superior specifications when compared to other Cat 5 cable. 24 AWG solid BC, 4 twisted-pairs, unshielded. Available in 1000 ft. put-ups.

Non-Plenum - specify black, blue, gray, green, orange, pink, red, white, yellow

Cable Part #	# of Pairs	Insulation Thickness	Nominal OD	DCR (Ω /1000 meters)	Mut. Cap. (pF / ft.)	Max. Attenuation								
						MHz	1	4	10	16	31.25	62.5	100	200
WD-1583A	4	0.008"	0.214"	9.38	15.0	dB/100'	2.0	4.1	6.5	8.2	11.7	17.0	22.0	32.0

CM Rated



Phone: 800-666-0996

Fax: 800-569-4244

Email: info@btx.com

Web: www.btx.com