

SF1005-V+

SF1008+



# SPEEDFACE+ SERIES

Body-Temperature & Mask Detection  
with Face & Palm Recognition



SpeedFace + is a series of body-temperature and mask detection readers with integrated face & palm recognition used in user authentication applications.

The SpeedFace + embedded face recognition sensor provides 100% touchless user authentication for various applications including Access Control, Time & Attendance, Visitor Management, Event Management and more. Model SF1008+ can store and match up to 50,000 faces in less than 0.3 seconds while operating in both total darkness and bright sunlight (up to 50,000 Lux).

## Body Temperature & Mask Detection

In addition to providing face, palm, and fingerprint user authentication, SpeedFace+ can detect body-temperature and the presence of a protective mask being worn by both registered and unregistered users. Users can be denied door access if a user defined unacceptable body temperature or if no mask is detected.

The ability to quickly & accurately detect body-temperature and the presence of a mask is becoming increasingly important for airports, schools, commercial office buildings, and other public meeting areas.

People identified having unacceptable body-temperature and their supervisors can then take appropriate action. SpeedFace+ combines a powerful embedded thermal camera and ZKTeco's latest face and fingerprint recognition algorithms that are supported by an optimized dual-core processor. SpeedFace+ is unmatched in accuracy, matching-speed, and versatility. It provides advanced security and convenience, all on a single affordable device.

# FEATURES:

- User authentication read range up to 8 feet
- Body-temperature read range accurate up to +/- 0.6°F
- Model SF1008+ stores & matches up to 50,000 face templates (SF1005-V+, 6,000)
- Face verification with or without wearing a mask
- Model SF1005-V+ additionally stores and matches up to 10,000 fingerprint templates
- Model SF1008+ has an 8" programmable touchscreen display (SF1005-V+, 5" display)
- Intelligent energy-saving design
- Dual-lens IR & VL camera recognizes faces in both total darkness and bright sunlight

*\*Body temperature accuracy +/- 0.6 °F when installed in climate controlled rooms. If room temperature is variable, ZKTeco recommends recalibrating SpeedFace+ temperature settings accordingly.*

# SPECIFICATIONS:

## Capacity (model SF1008+)

Faces: 50,000 | Palms: 5,000

## Capacity (model SF1005-V+)

Faces: 6,000 | Fingerprints: 10,000 | Palms: 3,000

## Compatibility

Wiegand Input Panels  
Wiegand Output readers  
ZKBioSecurity Software  
ZKTeco Security Relay Box (SRB)

## Hardware

900 MHz Dual Core CPU  
512MB RAM/ 8G Flash  
8" or 5" Touch Screen Display  
2MP WDR Camera  
Distance Detection Sensor  
Reset Button & Tamper Switch

## Access Control Interface

Lock Relay Output  
Alarm Output / Auxiliary Input  
Exit Button / Door Sensor

## Special Functions

Liveness Detection  
Event Snapshot

## Standard Functions

Access Levels, Groups, Holidays  
DST, Duress Mode (password)  
Anti-Passback, Record Query  
Tamper Switch Alarm

## Temperature Detection

Accuracy: +/- 0.6 °F  
Distance: up to 18 inches

## Protective Mask Detection

## Communication

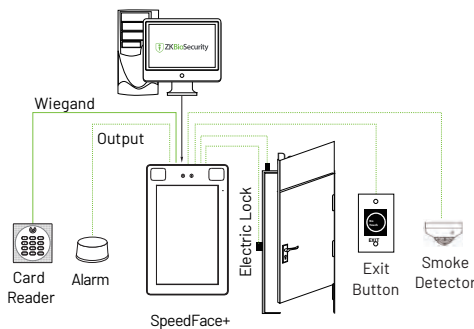
TCP / IP  
RS485  
Wiegand Input / Output  
Wi-Fi

## Additional Info

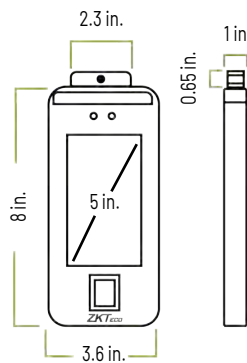
Face Algorithm: ZKLiveFace 5.8  
Working Temp: -40 to 140°F  
Working Humidity: 20% - 93%  
Storage Temp: 32 to 122°F  
Storage Humidity: 20% - 90%  
Net Weight: 1.5 lbs  
Size (HxLxD): 8.9 x 5.6 x 1 inch

**Power** Operating Voltage: 12V DC  
Current Draw: < 2,000mA

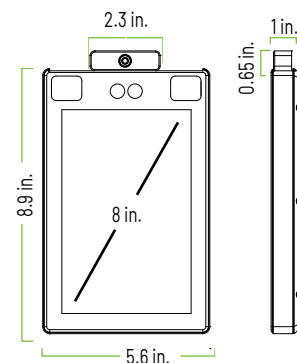
# CONFIGURATION:



# DIMENSIONS:

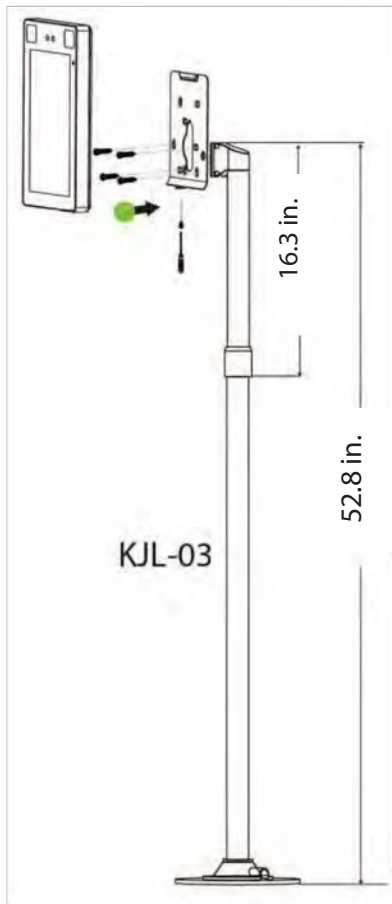


**Model SF1005-V+**



**Model SF1008+**

## SF-MOUNTING-POLE:



SF-Mounting-Pole is a 58.8 in. mounting pole for ZKTeco SpeedFace+ series readers (SF1008+ and SF1005-V+). The 16.3 inch piece allows for an adjustable height.

The SF-Mounting-Pole installs directly to the floor.

Material: Powder Coated Steel  
Finish: White and Silver

## SF-WALL-MOUNT:

SF-Wall-Mount is a wall plate and adapter combination that allows for an adjustable angle for both SF1008+ and SF1005-V+.

The SF-Wall-Mount installs directly to the wall or to the SF-Mounting-Pole.

Material: Steel  
Finish: Grey

